
SIE HABEN FRAGEN ZU DIESEM MATERIAL ?
KONTAKTIEREN SIE UNS GERN UNTER:

berlin@materialagentur.de
030 / 25 46 92 92
materialagentur.de



NEWSLETTER

materialagentur.de/kontakt/newsletter-abonnieren.html



LINKED IN

linkedin.com/company/planundb/

Plan +B GmbH | Die Materialagentur
Marco Zatti | Geschäftsführer & Objektberater

Haeselerstraße 17H
14050 Berlin



Website
www.himacs.eu



LX Hausys Europe GmbH

Lyoner Str. 15, Atricom C6, 60528 Frankfurt am Main, Germany
Tel : +49 (0)69 583 029 467 / Fax : +49 (0)69 6611 3506

LX Hausys Europe GmbH – Representative office in the UK

Suite 5, 80 Churchill Square, Kings Hill, West Malling, Kent ME19 4YU, UK
Tel : +44 (0)1732 897820

E-mail : info@himacs.eu

The information contained in this catalogue is intended to be for information only and can be amended at any time without prior notification.

© 2022 LX Hausys Europe GmbH. All rights reserved.



www.himacs.eu

HI·MACS

The HIMACS Colour Book



Natural Acrylic Stone™



OUTSTANDING FEATURES ABOUND. A COMPELLING MATERIAL.

HIMACS is a delicate composition of acrylic, minerals and natural pigments that combine to create a smooth, non-porous, thermoformable and visually seamless surface. The material meets the highest standards for quality in all aspects: material performance, fabrication, functionality and hygiene. Thanks to these qualities and the outstanding flexibility in fabrication and design, HIMACS offers countless advantages over conventional materials.



SEAMLESS PERFECTION

HIMACS allows for visually seamless fabrication. Smooth integration creates large areas without visible joints or edges as well as the flush mounting of bowls. This results in extremely hygienic, easy-to-clean installations, ideally suited for use in hospitals and laboratories.



HUGE COLOUR SPECTRUM

Colour selection is a crucial factor when it comes to high-quality design. HIMACS offers an enormous range of colours. No matter what colour you choose, HIMACS remains 100% homogeneous.

Photographed by © Petr Krejčí



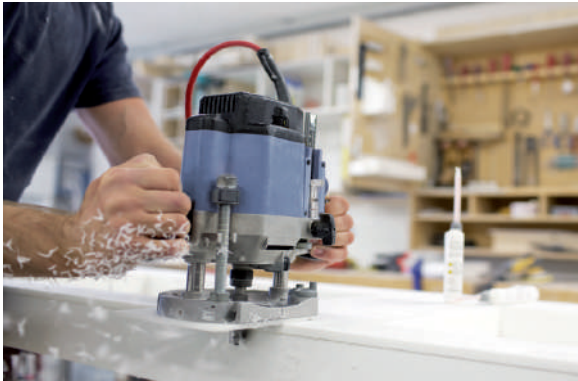
THREE-DIMENSIONAL DESIGN

HIMACS boasts a simple heating process and three dimensional thermoforming capabilities. This enables greater forming flexibility compared with other conventional materials so that spectacular ideas can quickly take on a concrete shape. HIMACS Ultra-Thermoforming formula allows the material to be better shaped; the minimal internal radius of 6mm (previously 50mm) opens a wholly new design dimension.



DRAMATIC TRANSLUCENCY

Certain colours and thicknesses of HIMACS exhibit a subtle translucency when exposed to light. The translucent properties of HIMACS make it the perfect choice for lamps and illuminated furnishings.



SIMPLE PROCESSING

Although HIMACS is almost as robust as stone, it can be worked in the same way as wood. Using conventional carpenters' tools, this solid surface material can be sawn, routed or drilled. Thanks to the new Thermalcure-technology the surface of HIMACS performs better than the standard in Solid Surface. You save precious time because it is easier to work with.

All fabrication pictures on this page : Photographed by Dominik Obertreis

HIMACS PRODUCT LINE UP

HIMACS is a solid surface material that can be moulded into any shape. It is widely used for architectural and interior applications, such as sculptural and high performance wall-cladding or kitchen, bathroom and furniture surfaces, in commercial, residential and public space projects. It is composed of acrylic, minerals and natural pigments that come together to provide a smooth, non-porous and visually seamless surface which meets the highest standards for aesthetics, fabrication, functionality and hygiene offering manifold advantages over conventional materials.



TERRAZZO

HIMACS Terrazzo can be used for residential, commercial and public projects of any size or style and it's especially appropriate in high traffic areas such as restaurants and bars.



INTENSE ULTRA

The new HIMACS Intense Ultra combines the best of two worlds: Intense Colour Technology and Ultra-Thermoforming.



STRATO

The Strato Collection enhances the HIMACS colour range with brand new design possibilities: the marked lines create geometry through its soft structure and subtle look.



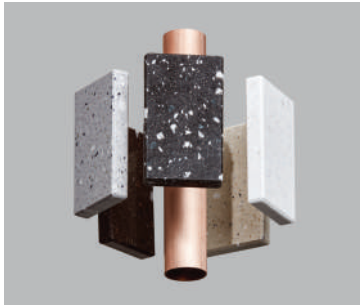
CONCRETE

Warm-tones concrete-like finishes are now available in the solid surface material, providing completely new opportunities for architects and designers.



ASTER

With transparent grains and mother of pearl shimmer.



LUCIA

Natural trendy colours characterised by linear-edged, midsize particles: three of those designed by Dutch Star Designer, Marcel Wanders.



SOLIDS

From effortless to extravagant, classic to ultra-contemporary - this is a timeless collection.



MARMO & AURORA

Captivating random veined texture, reminiscent of marble.



VOLCANICS

Full of depth and mysticism, akin to a precious natural stone but with all of the advantages of solid surface material.



GRANITE, QUARTZ, SAND & PEARL

A huge selection of textures and colours. Natural, elegant and perfect in combination.



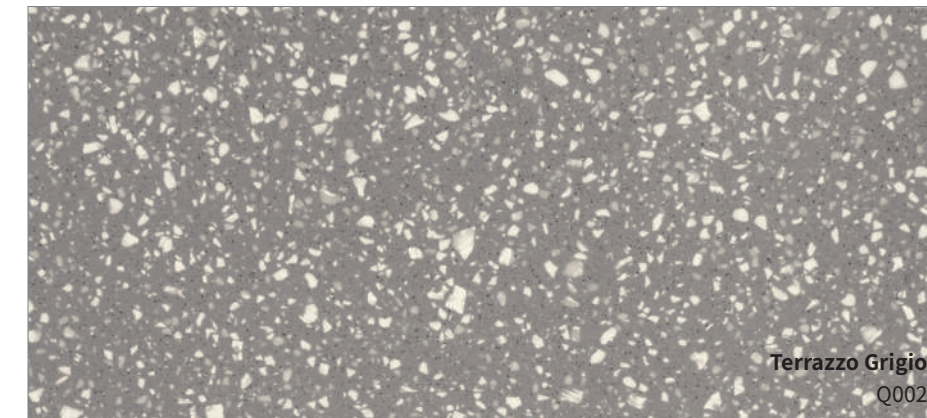
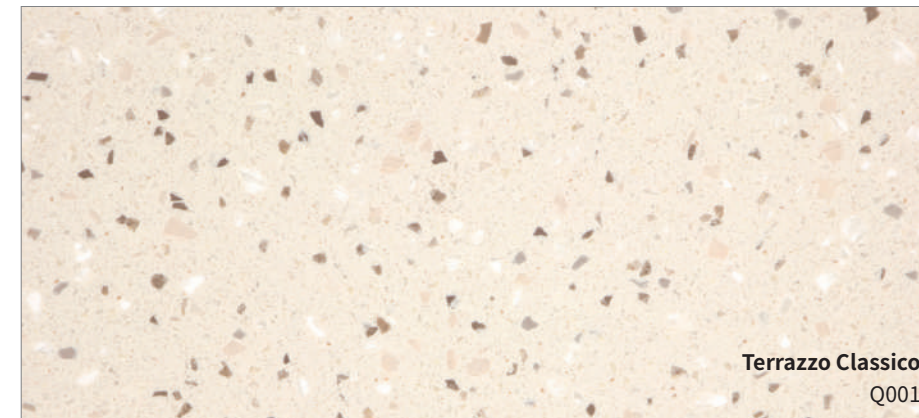
LUCENT

When combined with precisely positioned light sources, the translucent pastel shades become transformed into dramatic design "highlights".

All pictures in this page photographed by © Petr Krejčí

HIMACS TERRAZZO COLLECTION

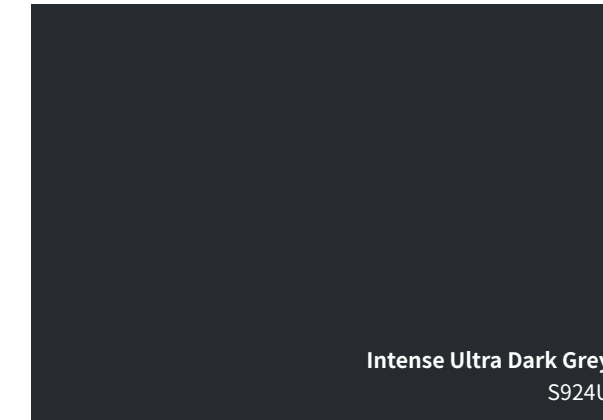
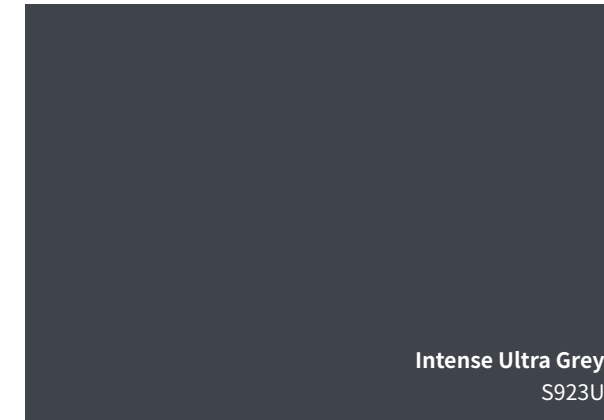
The Terrazzo trend is everywhere and it's a look with longevity, as our love for this random pattern mix is here to stay. Taking the trend and developing it for application in any interior, HIMACS Terrazzo can be used for residential, commercial and public projects of any size or style and it's especially appropriate in high traffic areas such as restaurants and bars. The graphic design, renowned for its speckled, dotted, asymmetrical, imperfect random pattern contrast has evolved over the years to become the abstract illustrative print we know and love today. Terrazzo goes with just about anything and the new HIMACS Terrazzo colours demonstrate this beautifully with the neutral tones of Terrazzo Classico and the industrial feel of Terrazzo Grigio.



HIMACS INTENSE ULTRA COLLECTION

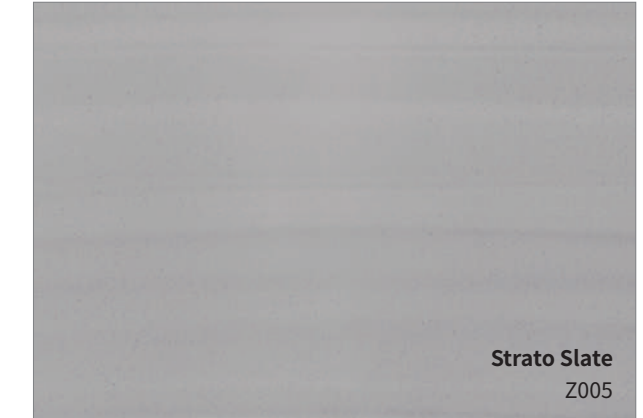
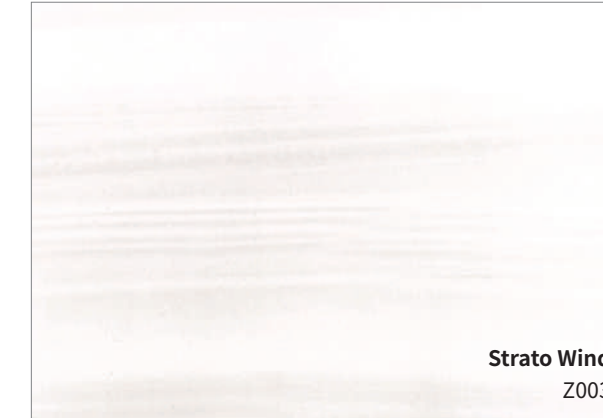
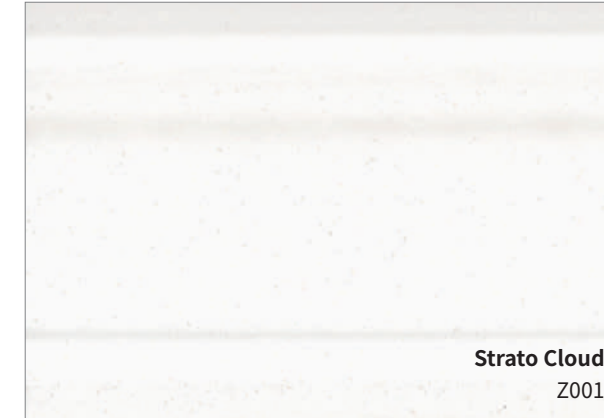
The new HIMACS Intense Ultra is a revolution for the Solid Surface market which opens new possibilities for surface design. The new product range combines the characteristics from two disparate worlds: Intense Colour Technology and Ultra-Thermoforming. Dark colours become more “intense”, darker and also more resistant, with less visible scratches. The new formulation allows for colour consistency during and after fabrication, maintaining the dark colour when worked, producing less sanding dust and leaving fewer sanding marks on the surface and edges.

The new HIMACS Intense Ultra, also has excellent thermoforming capabilities. This new formula allows the material to reach a very small internal radius, up to 6mm, with almost no whitening effect even when using dark colours. Sharp curves and dramatic designs in darker tones that were once out of reach for solid surface materials, are now made possible with HIMACS.



HIMACS STRATO COLLECTION

The brand new Strato Collection enhances the HIMACS colour range with brand new design possibilities: the marked linear patterns create geometry through its soft structure and subtle look. The skilful use of the new colour striations, vertically or horizontally, allow for great variation in each and every project. LX Hausys has taken inspiration from the linear patterns found in nature to create a collection composed of neutral hues and natural designs, combined with the latest generation solid surface material features.



HIMACS AURORA COLOURS

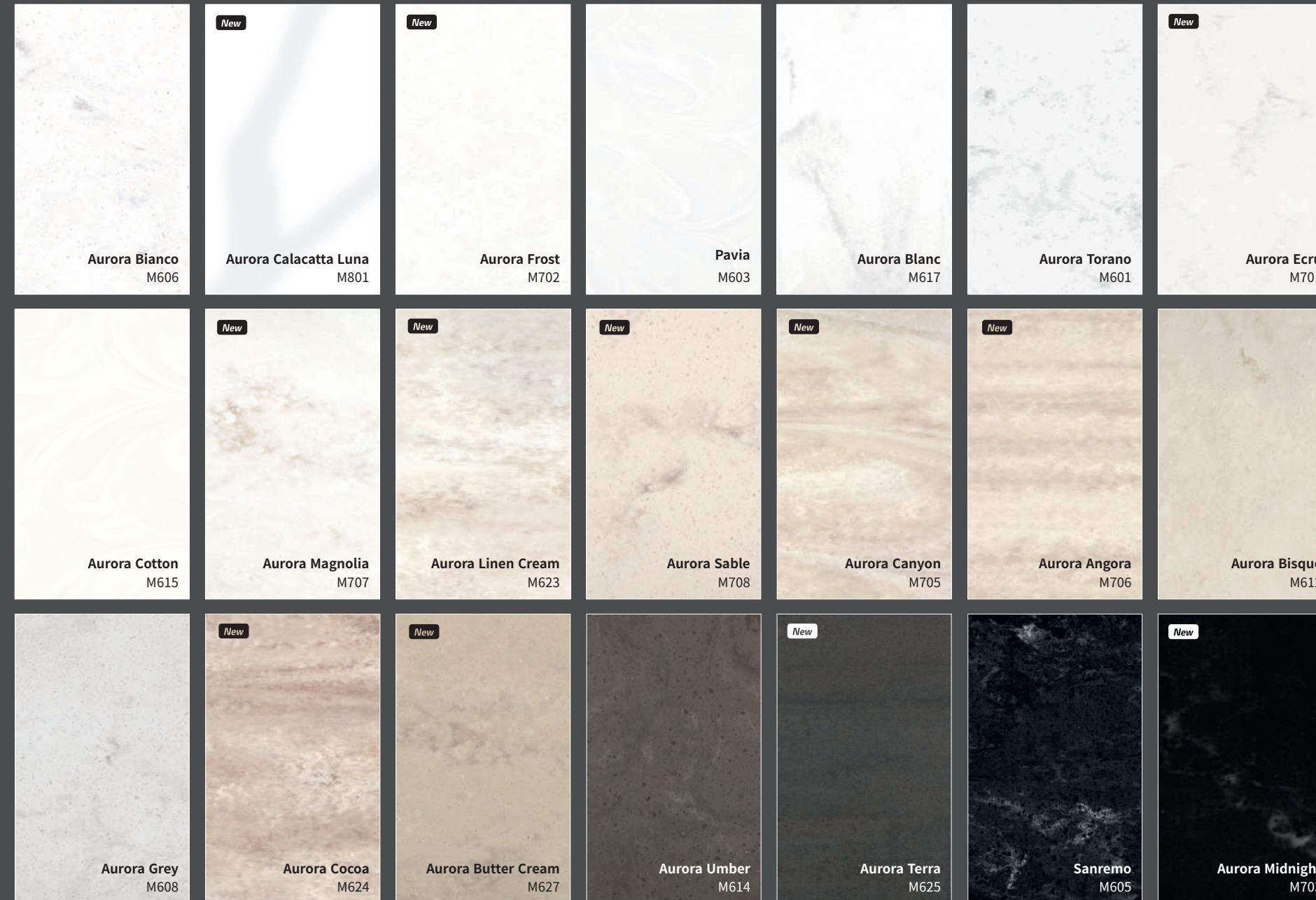


The Aurora Colours - an evolution of the Marmo Collection - combine aesthetics inspired by nature with all the benefits of the latest generation solid surface HIMACS:

The completely non-porous material, which can be thermoformed allowing curved shaping, also allows for seamless surfaces and is easy to repair and clean.

With the semi-translucency of the colours Aurora Frost, Pavia and Aurora Cotton you can play with light effects giving dramatic results to integrate this natural phenomenon to your interior design.

Aurora Linen Cream M623



1:1

1:46

Honed/Matt

Polished



Image: ©Studio Podrini

Aurora Bianco M606

Polished

Honed/Matt

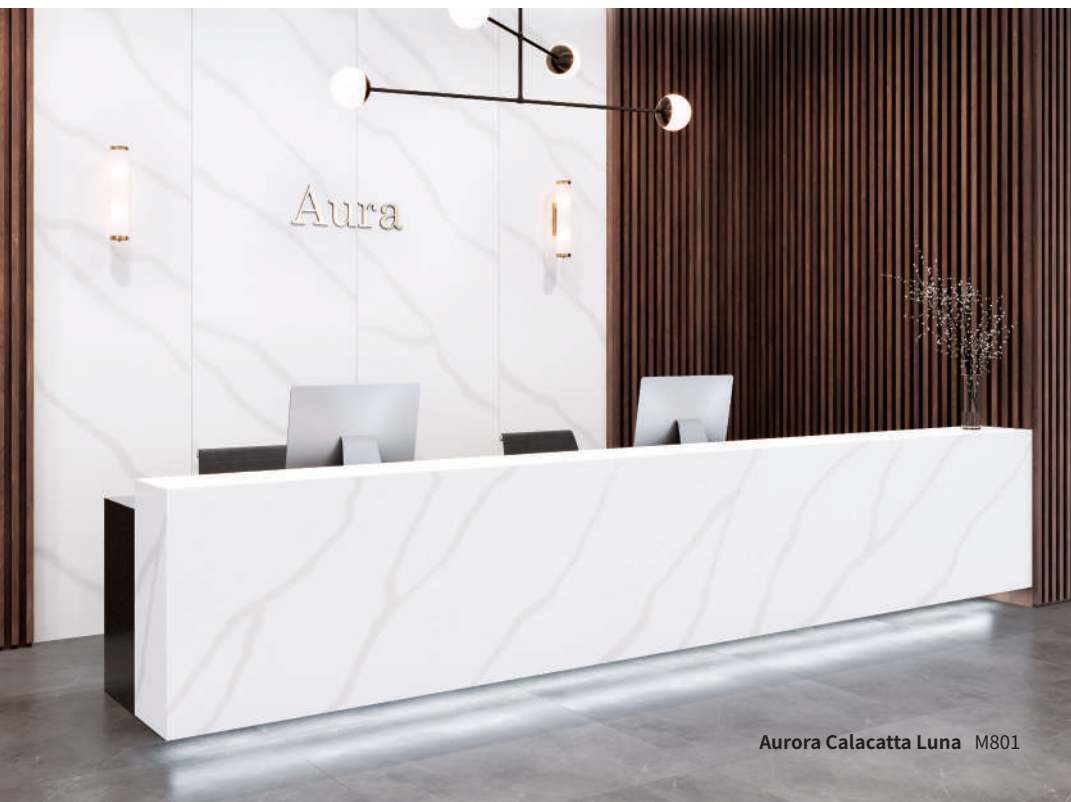


1:1

1:46

Honed/Matt

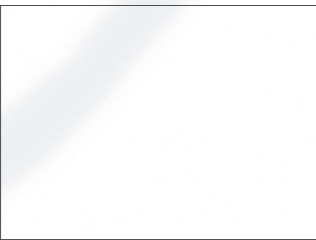
Polished



Aurora Calacatta Luna M801

Polished

Honed/Matt



1:1

Honed/Matt

Polished

Aurora Frost M702

1:46

Polished

Honed/Matt



1:1

1:46

Honed/Matt

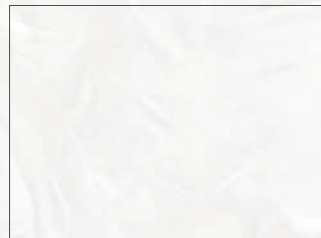
Polished



Pavia M603

Polished

Honed/Matt



1:1

Honed/Matt

Polished



Aurora Blanc M617

1:46

Polished



Honed/Matt











Honed/Matt



Aurora Magnolia M707

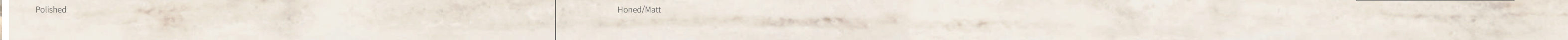


Polished



Honed/Matt





1:1

1:46

Honed/Matt

Polished



Aurora Sable M708

Polished

Honed/Matt





1:1

Honed/Matt



Aurora Canyon M705



1:46

Polished



Honed/Matt



1:1

Honed/Matt

Polished



Aurora Angora M706

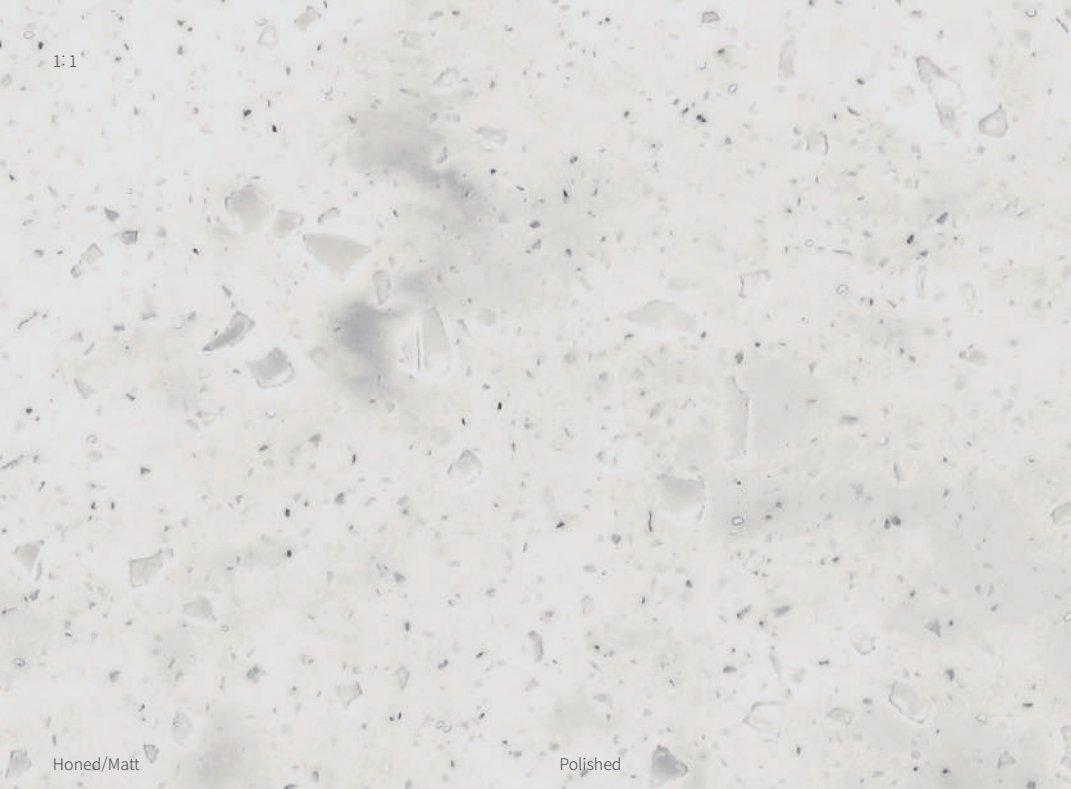
1:46

Polished

Honed/Matt







Honed/Matt



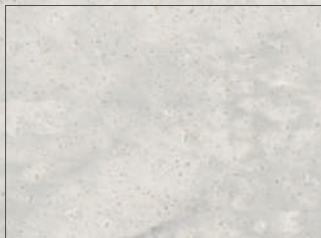
Aurora Grey M608



1:46

Polished

Honed/Matt



1:1

1:46

Honed/Matt

Polished



Aurora Cocoa M624

Polished

Honed/Matt



1:1

Honed/Matt

Polished



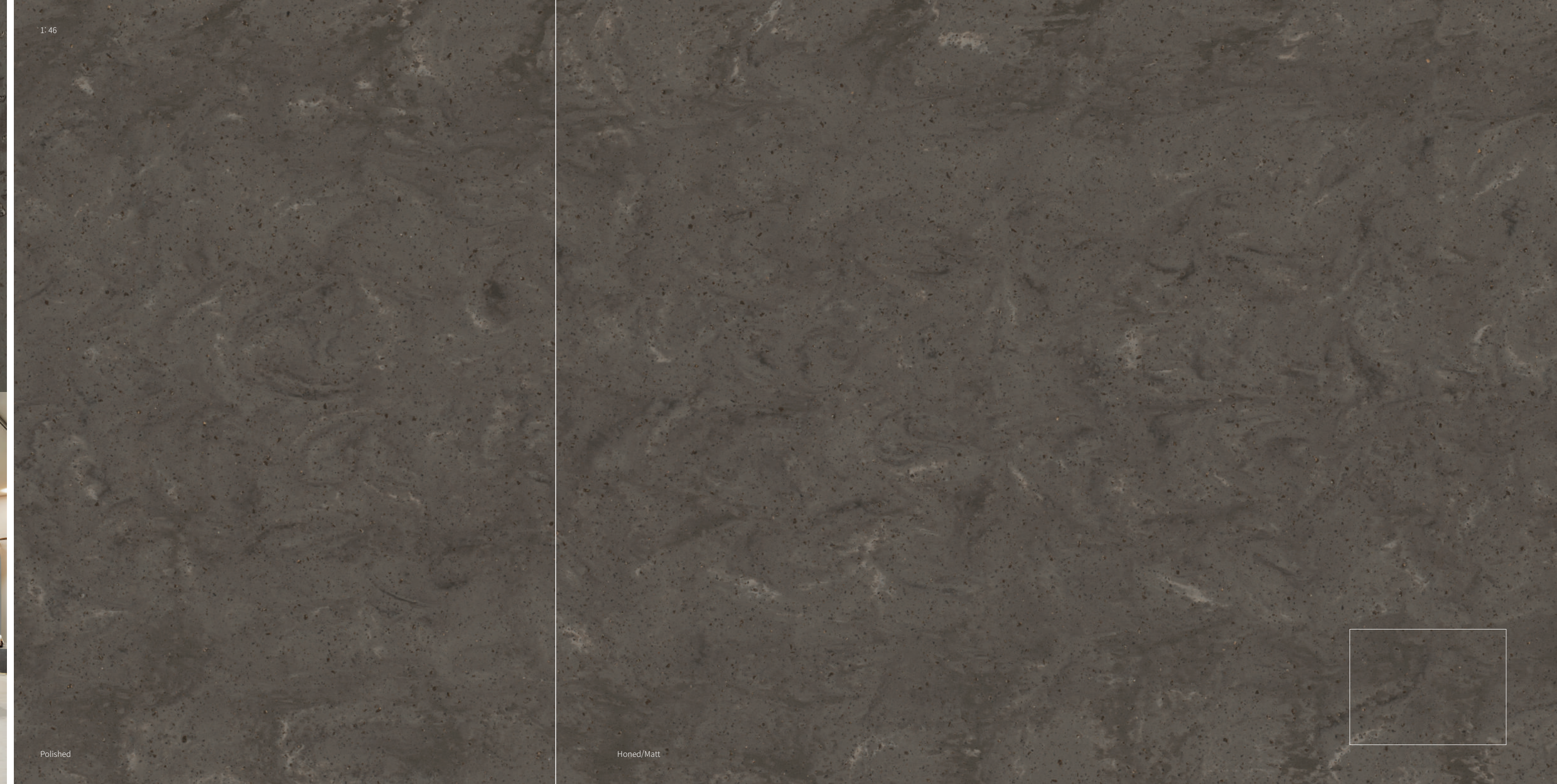
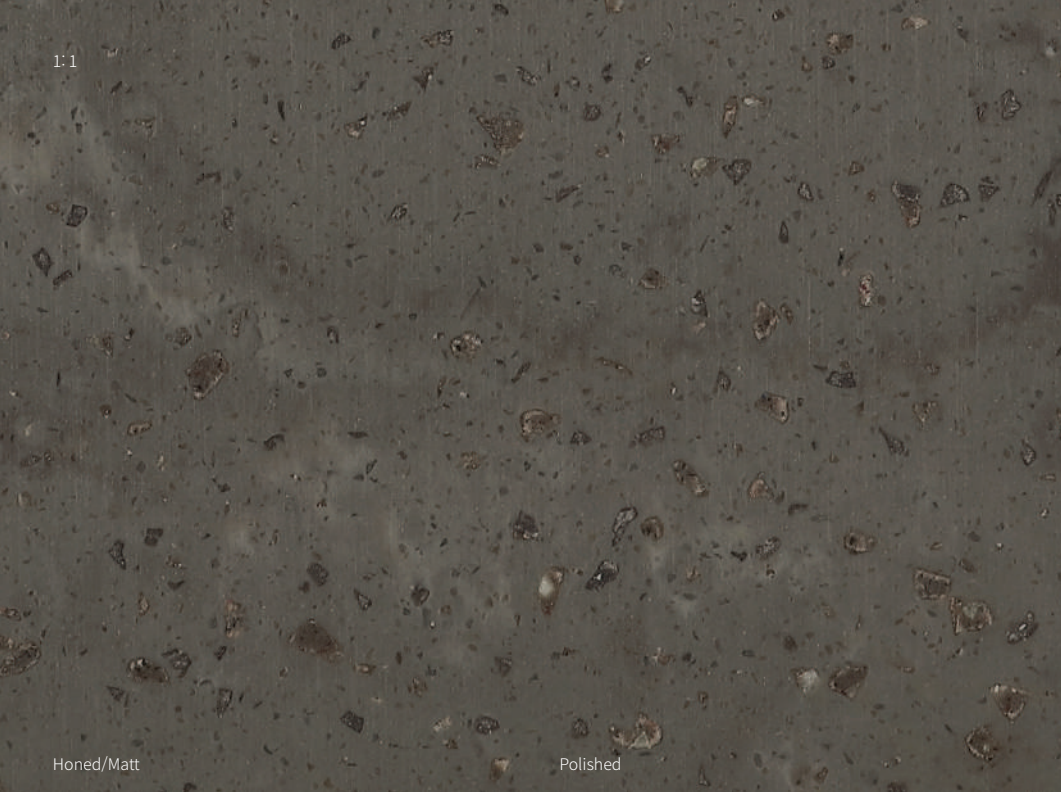
Aurora Butter Cream M627

1:46

Polished



Honed/Matt



1:1

Honed/Matt

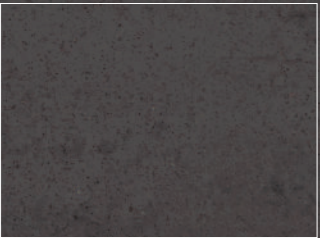
Polished

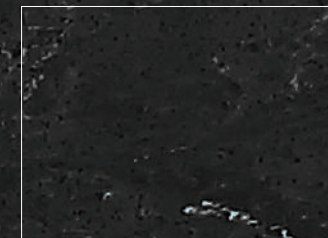
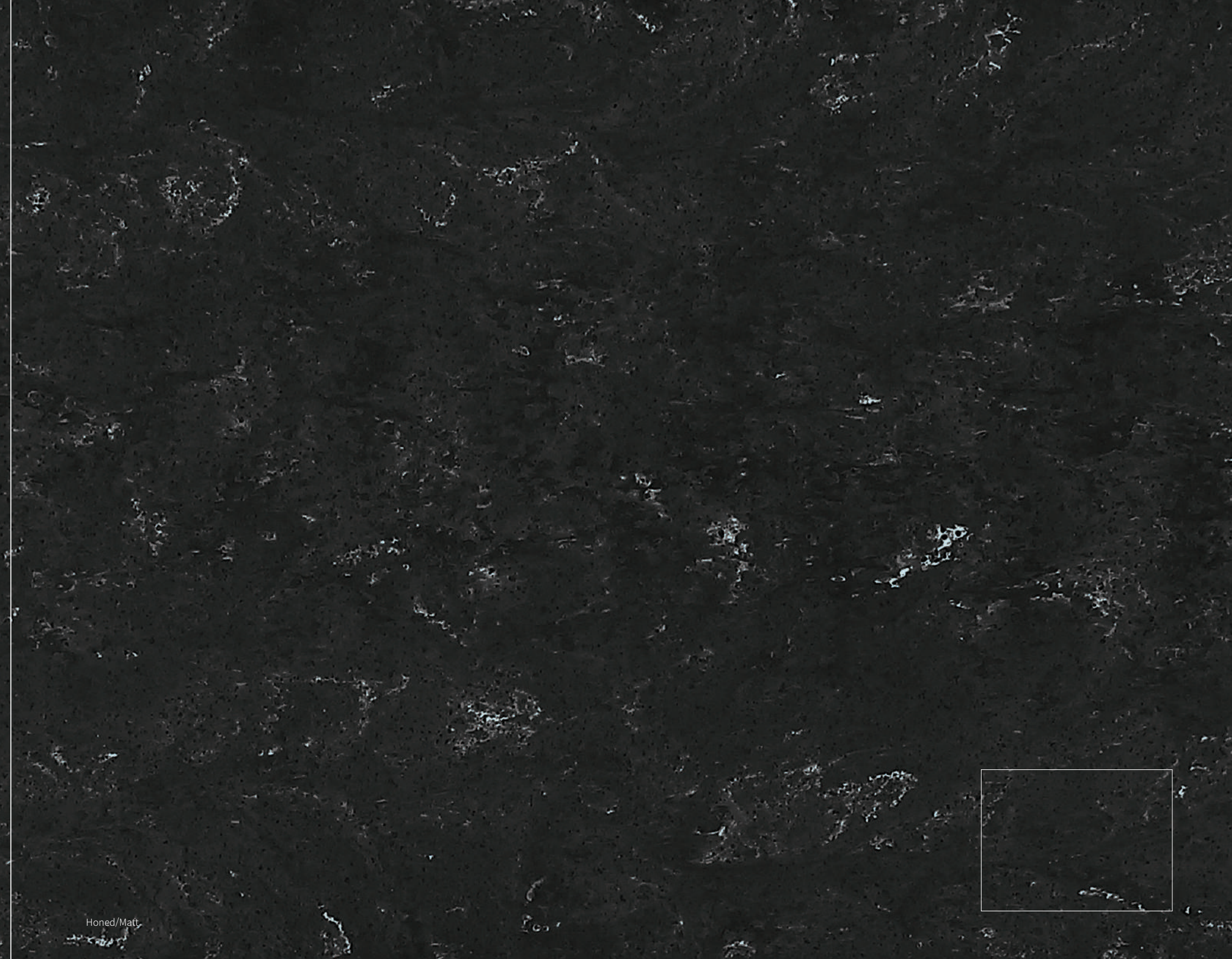
Aurora Terra M625

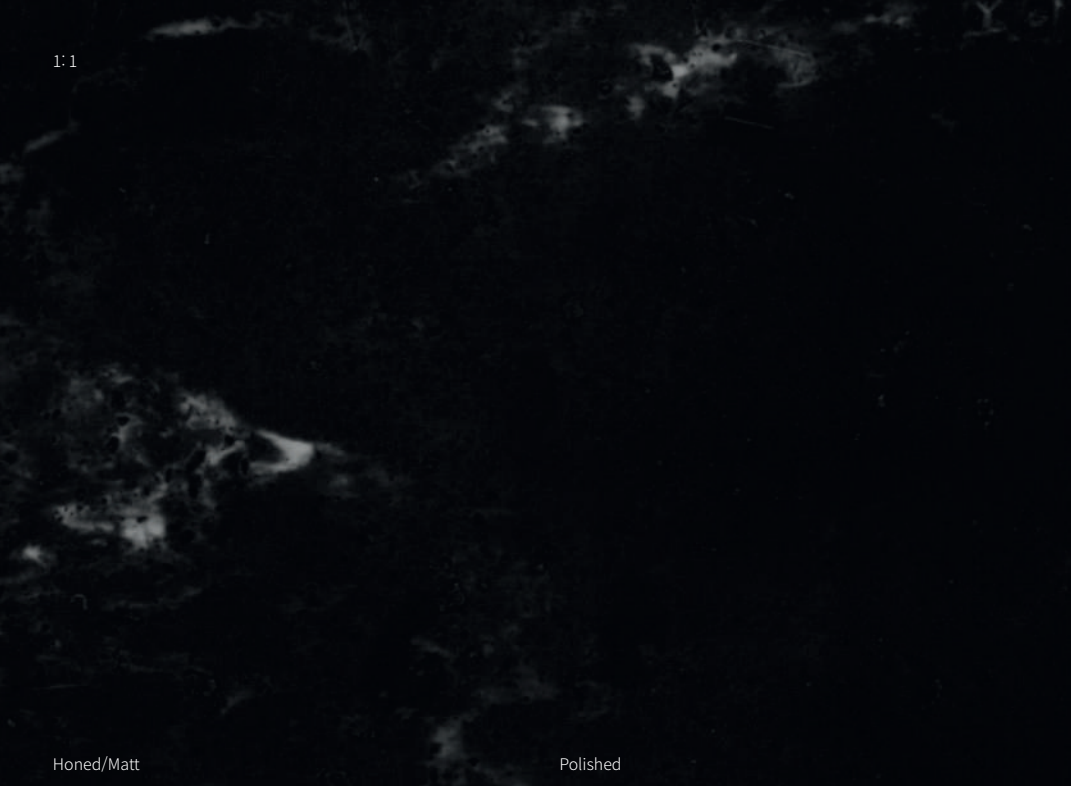
1:46

Polished

Honed/Matt



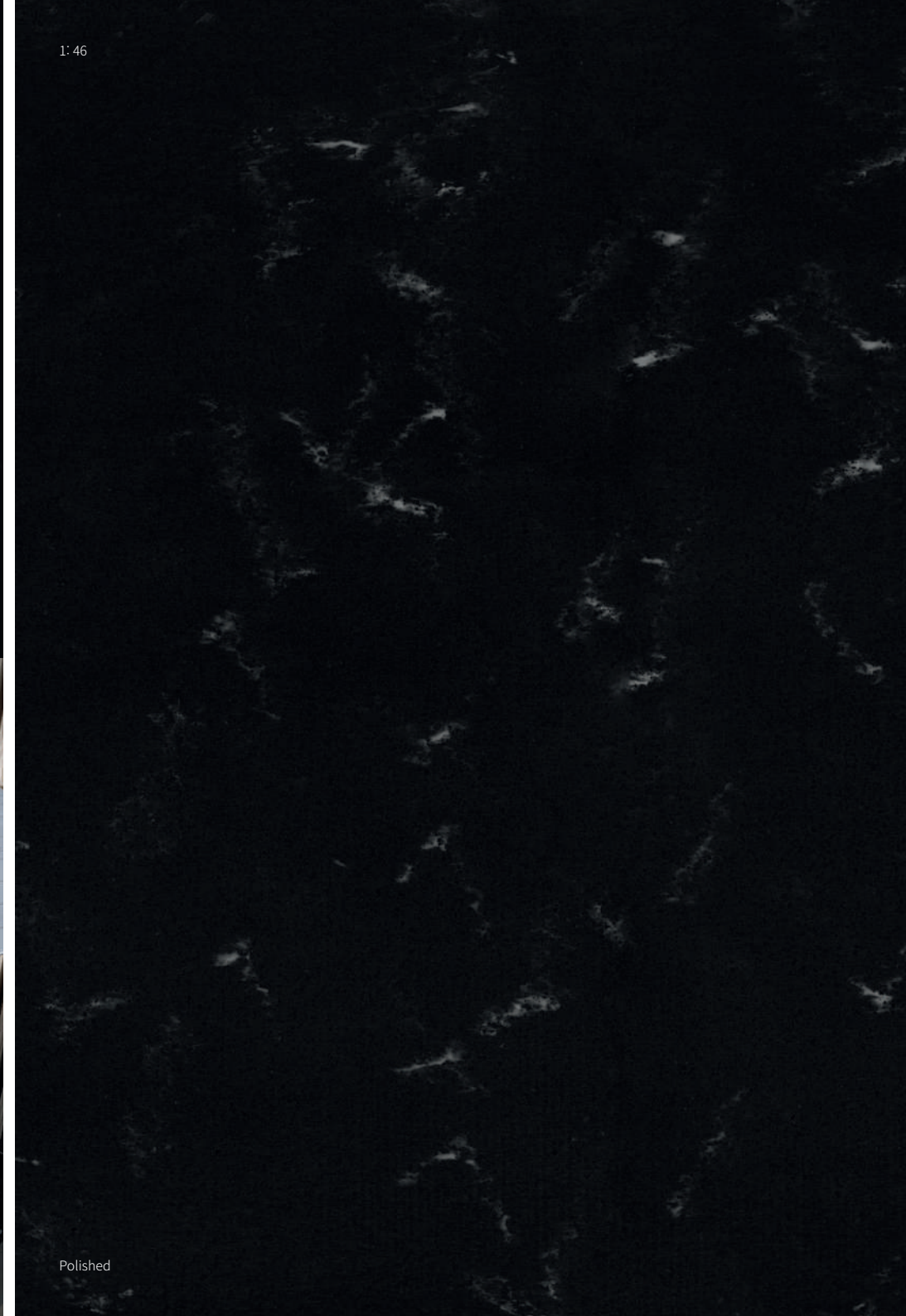




Honed/Matt



Aurora Midnight M703



Polished



Honed/Matt



1:1

Honed/Matt

Polished

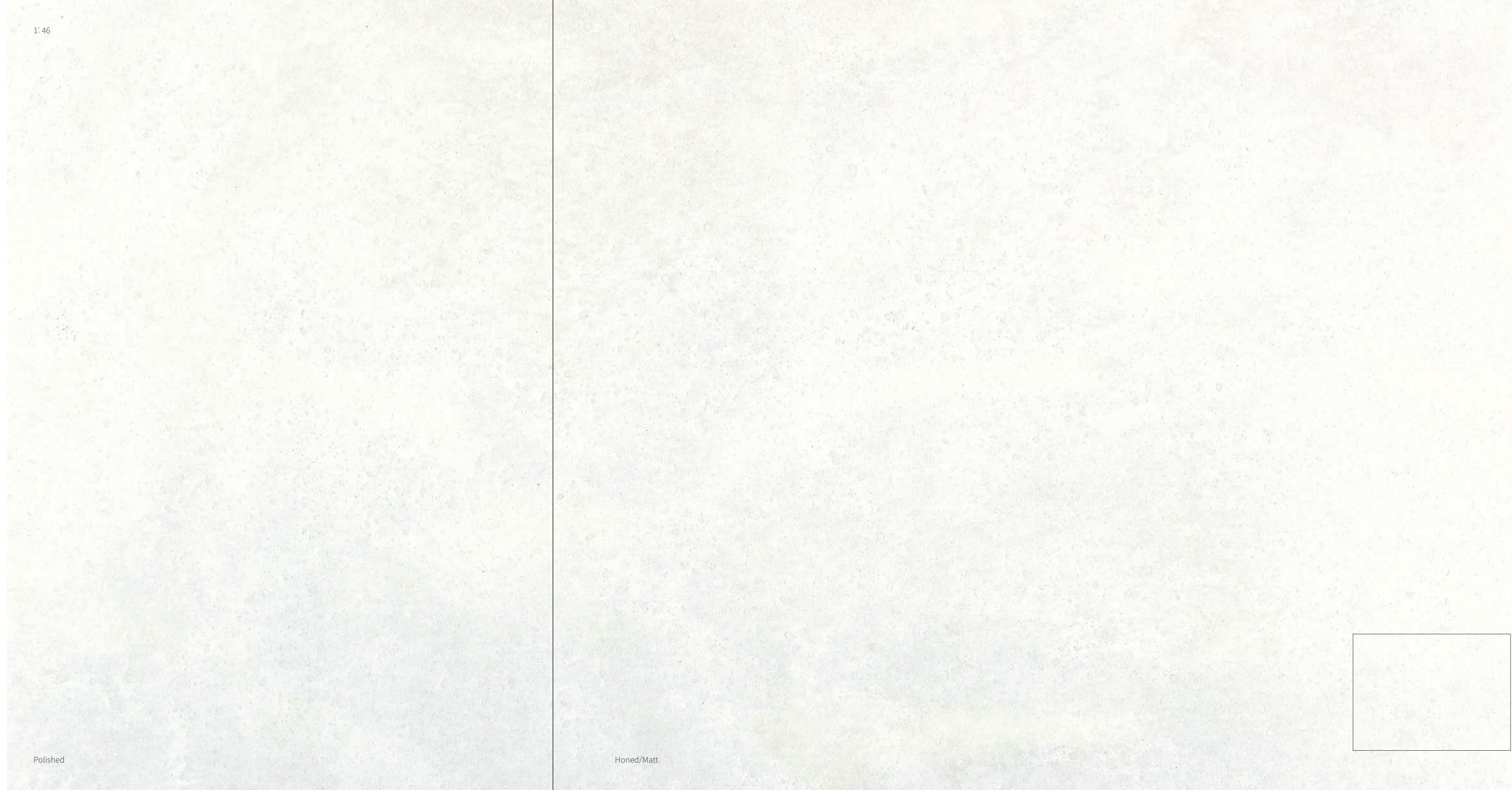


Project | Oberpollinger - The KaDeWe Group
Location | Munich, Germany
General Contractor | Ganter Interior GmbH (Waldkirch)
Planning Office | BEING BORN BUILDING BRANDS (Hamburg)
Fabricator | Moser GmbH (Haslach)
Photographer | ©Dirk Wilhelmy

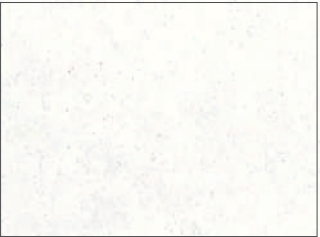
Ispani M428

1:46

Polished



Honed/Matt



1:1

1:46

Honed/Matt

Polished



Bellizzi M427

Polished

Honed/Matt



1:1

1:46

Honed/Matt

Polished

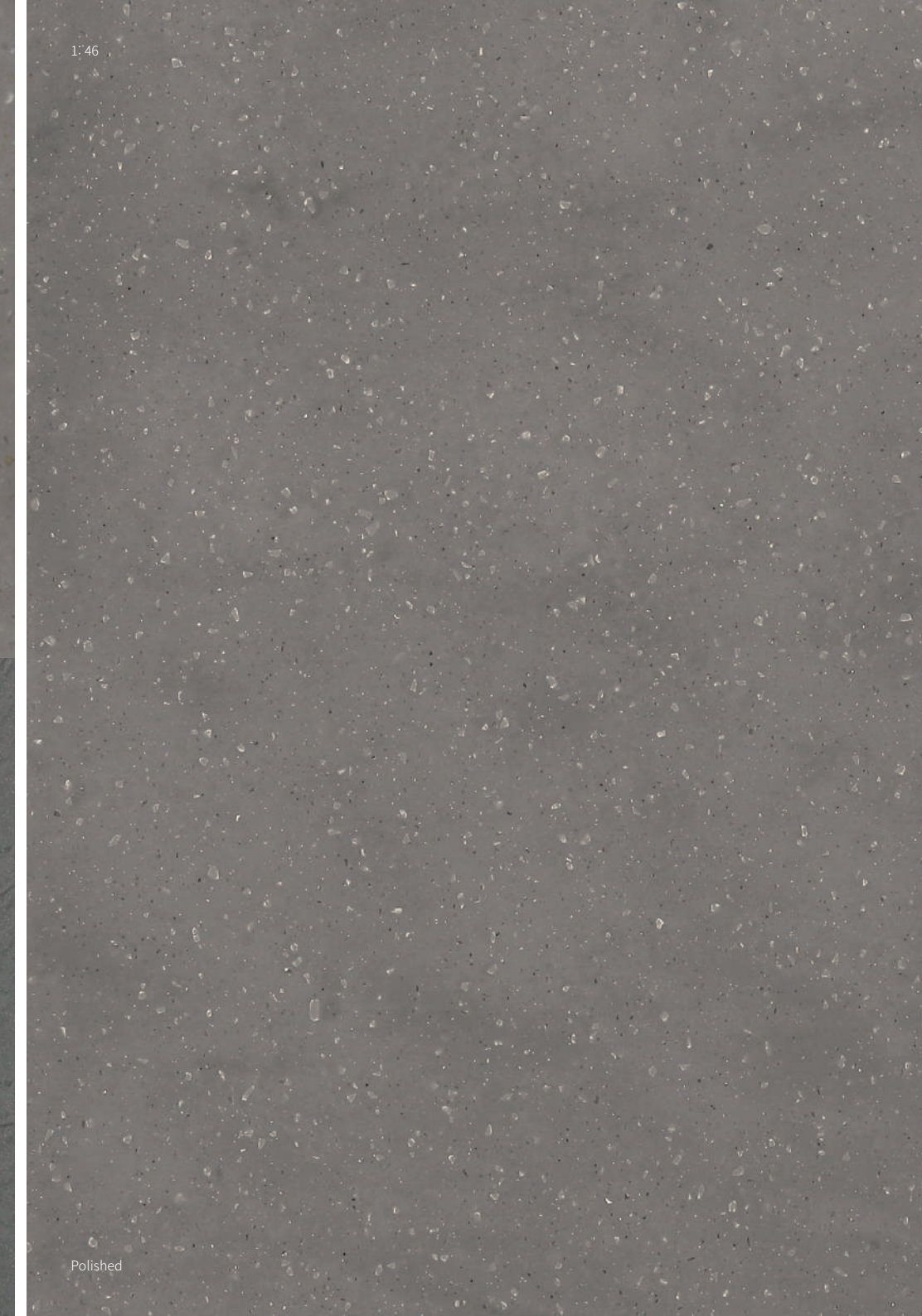
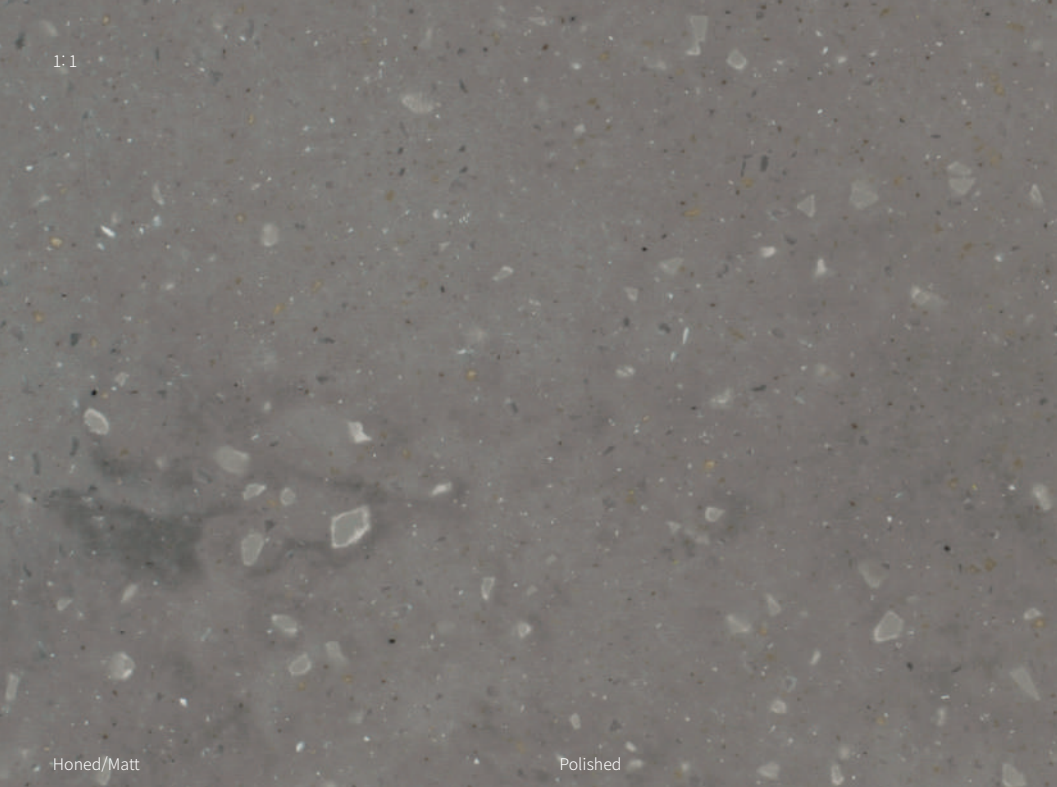


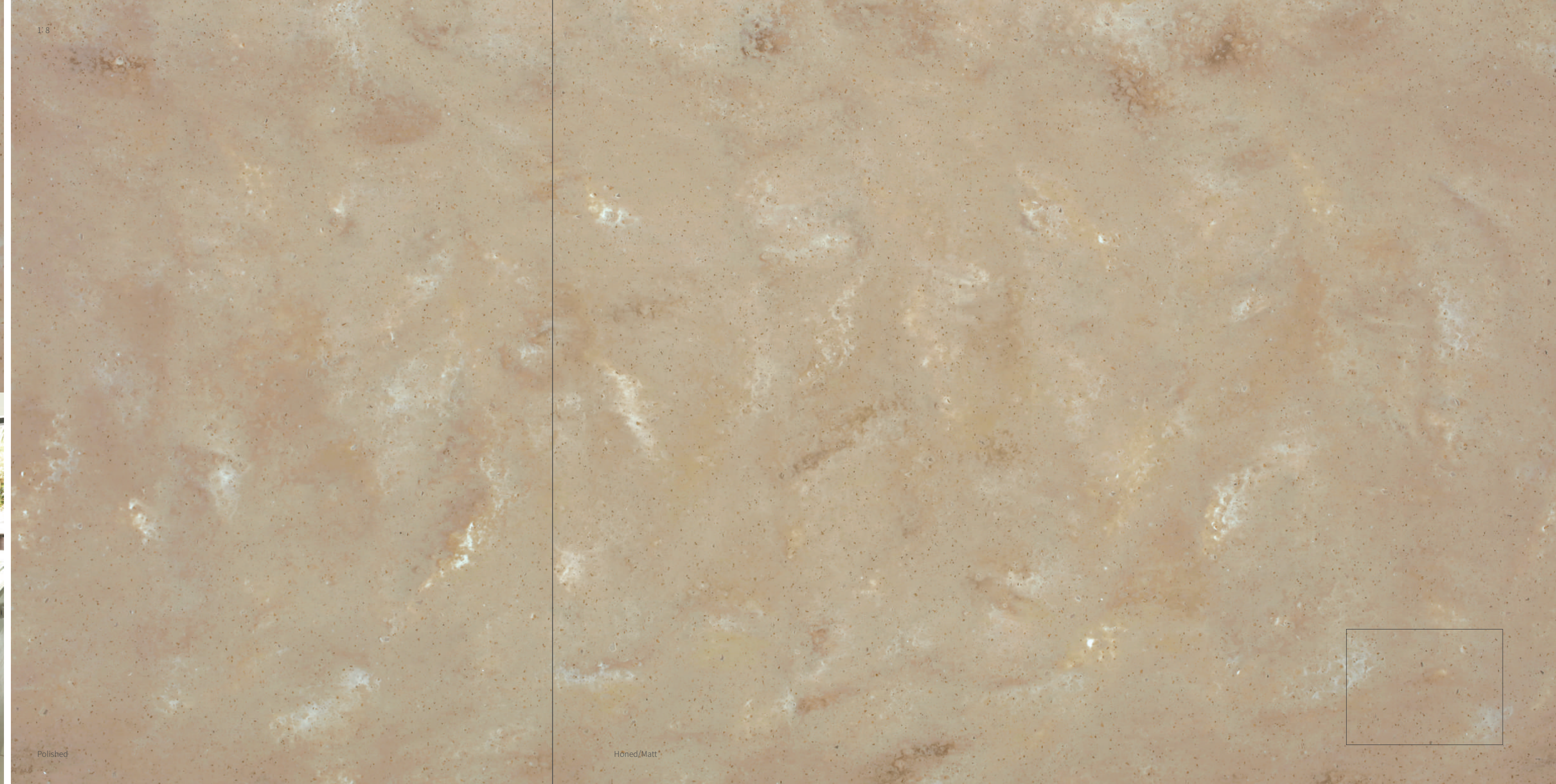
Edessa M501

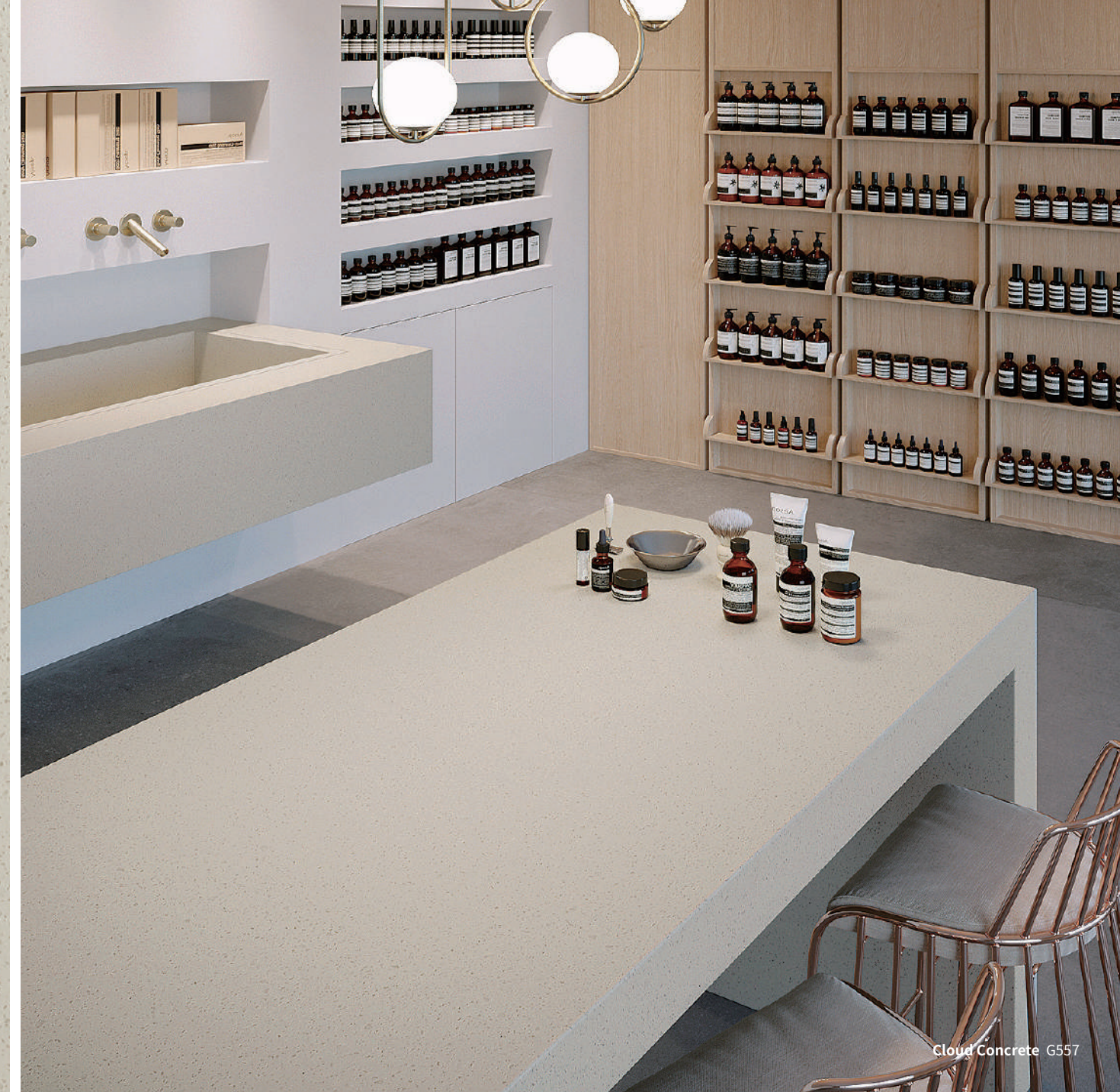
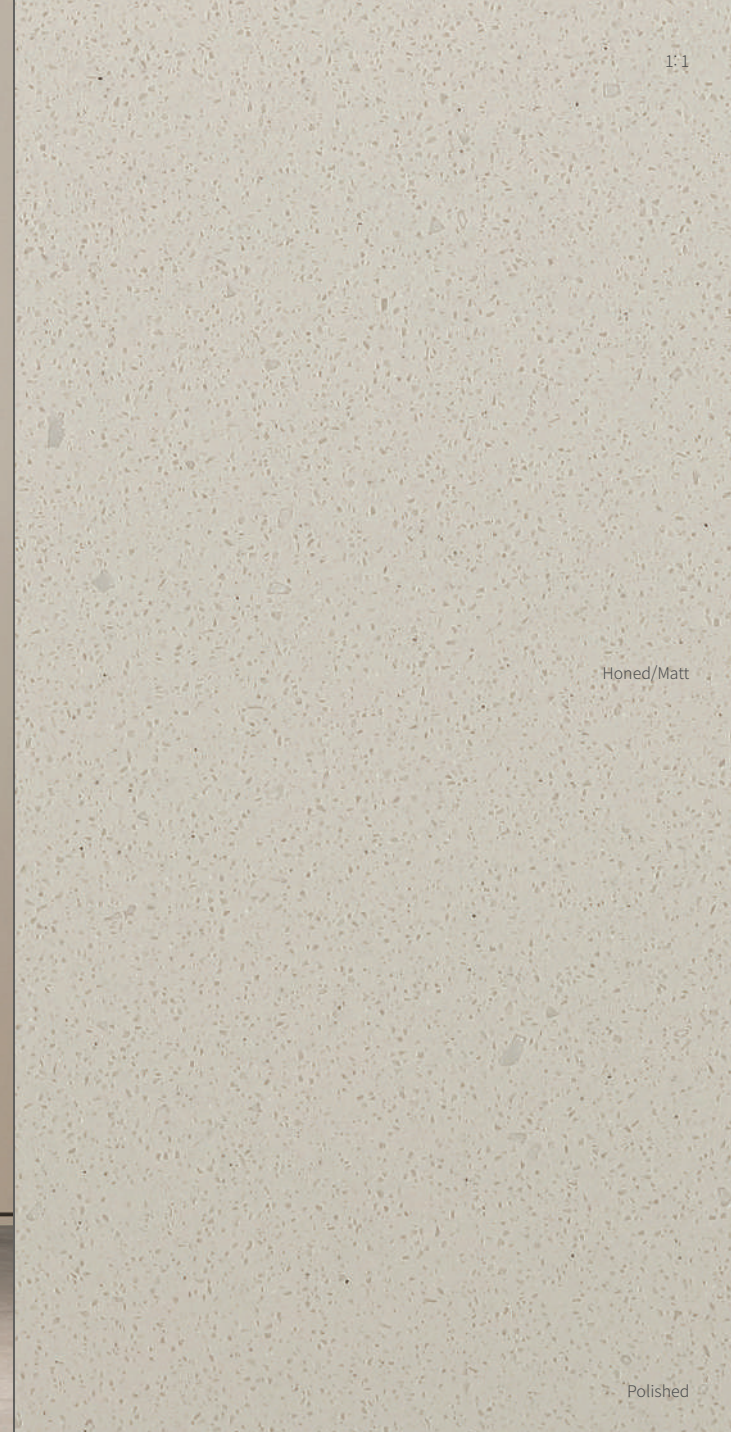
Polished

Honed/Matt









1:1

1:46

Honed/Matt

Polished

Chic Concrete M551

Polished

Honed/Matt



1:1

1:46

Honed/Matt

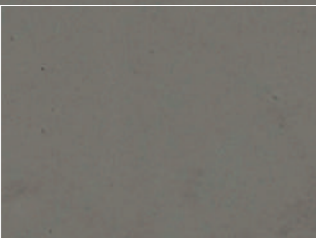
Polished



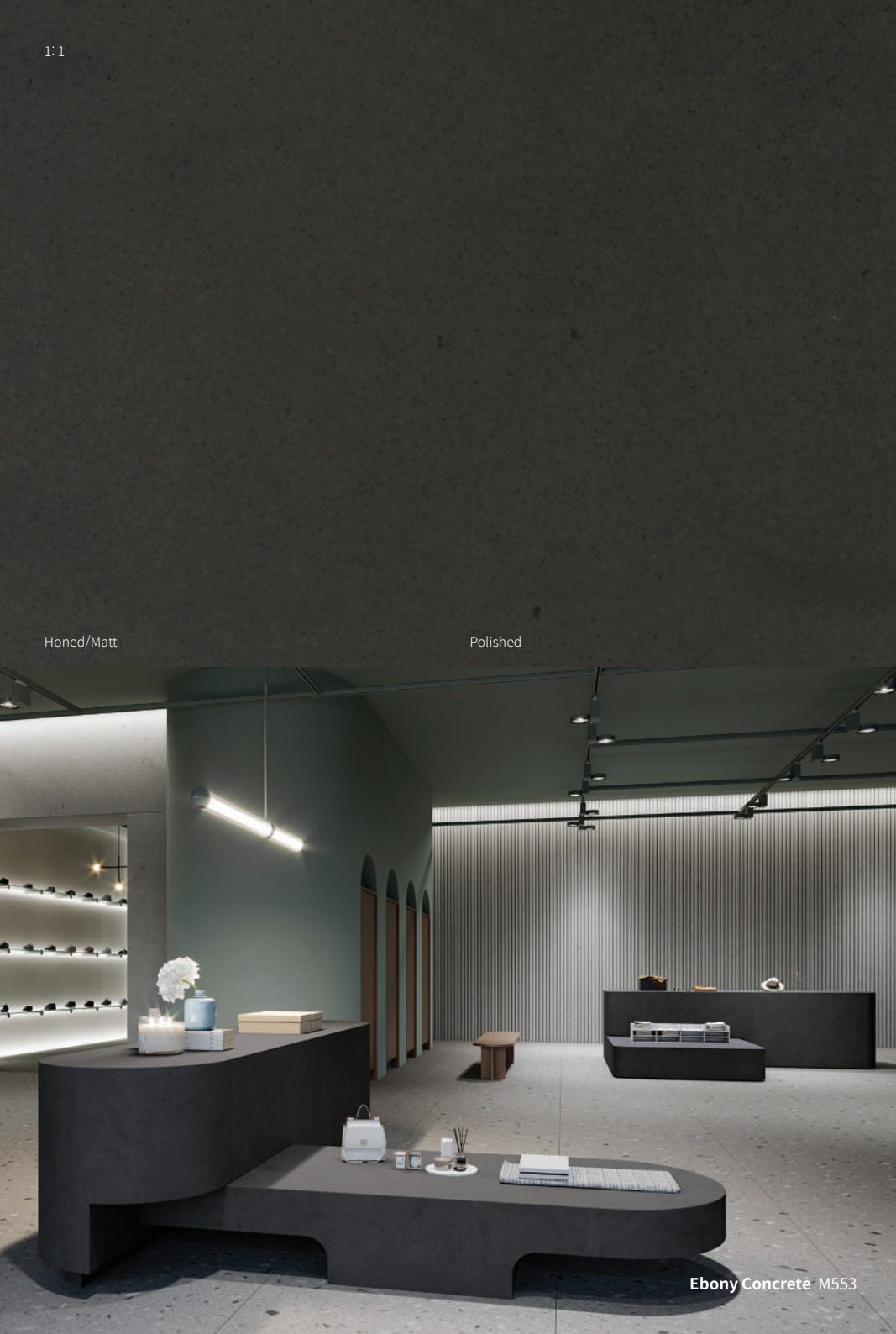
Shadow Concrete M552

Polished

Honed/Matt



1:1



Honed/Matt

Polished

Ebony Concrete M553

1:46



Polished

Honed/Matt

Honed/Matt

Polished



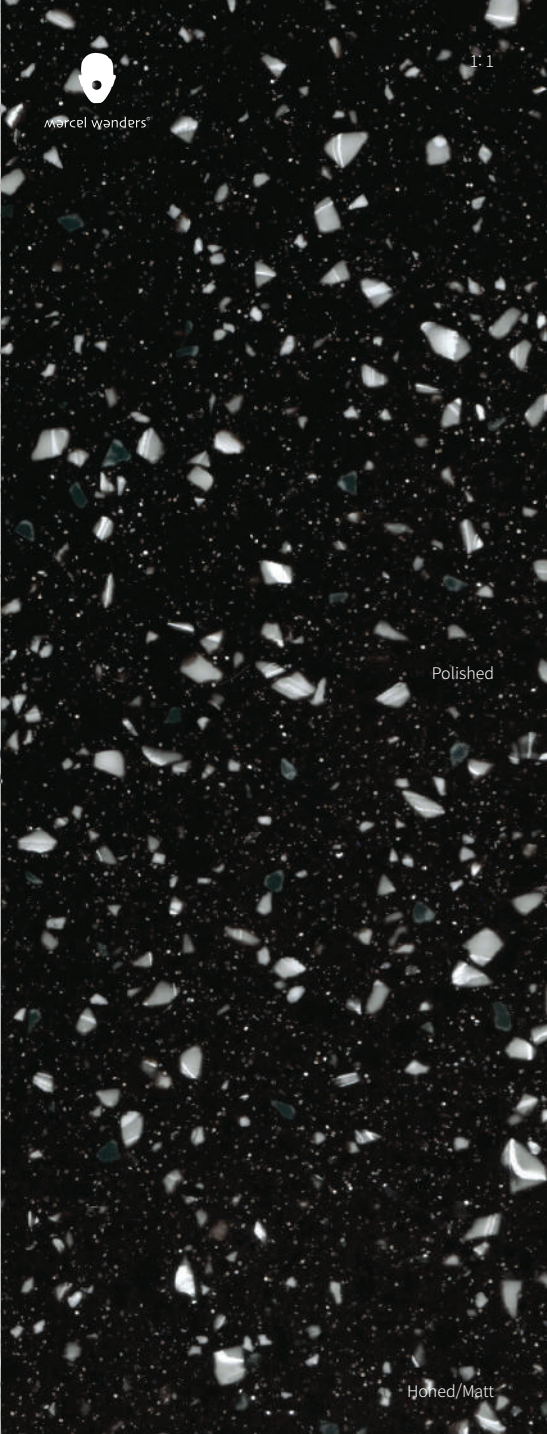
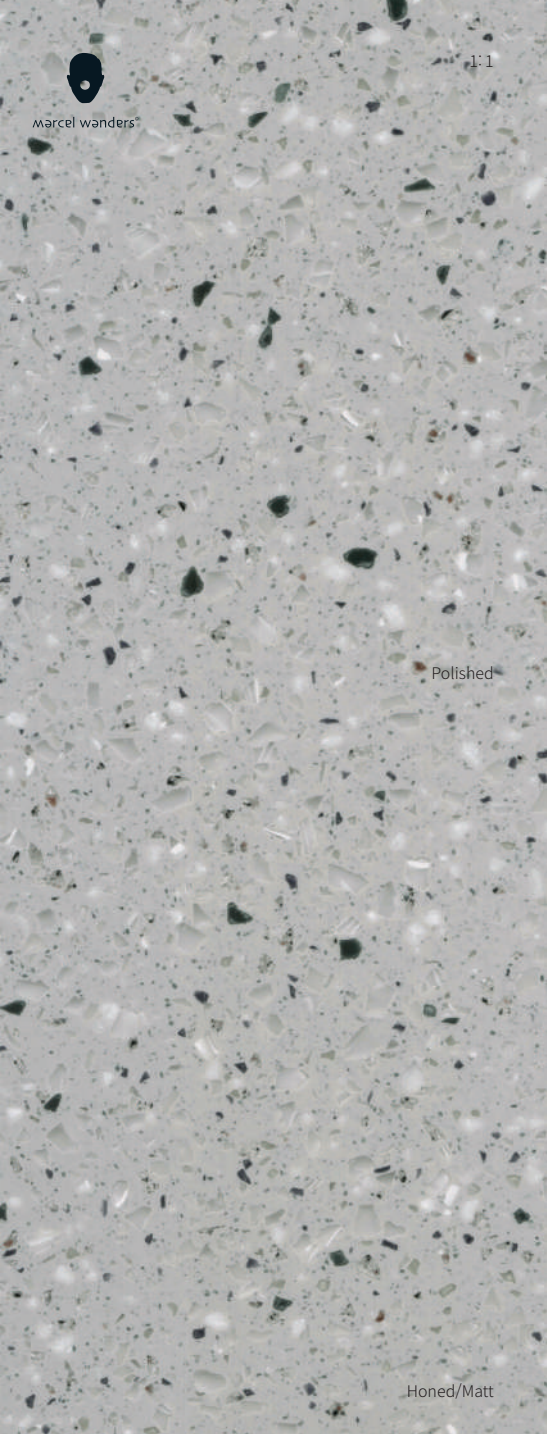
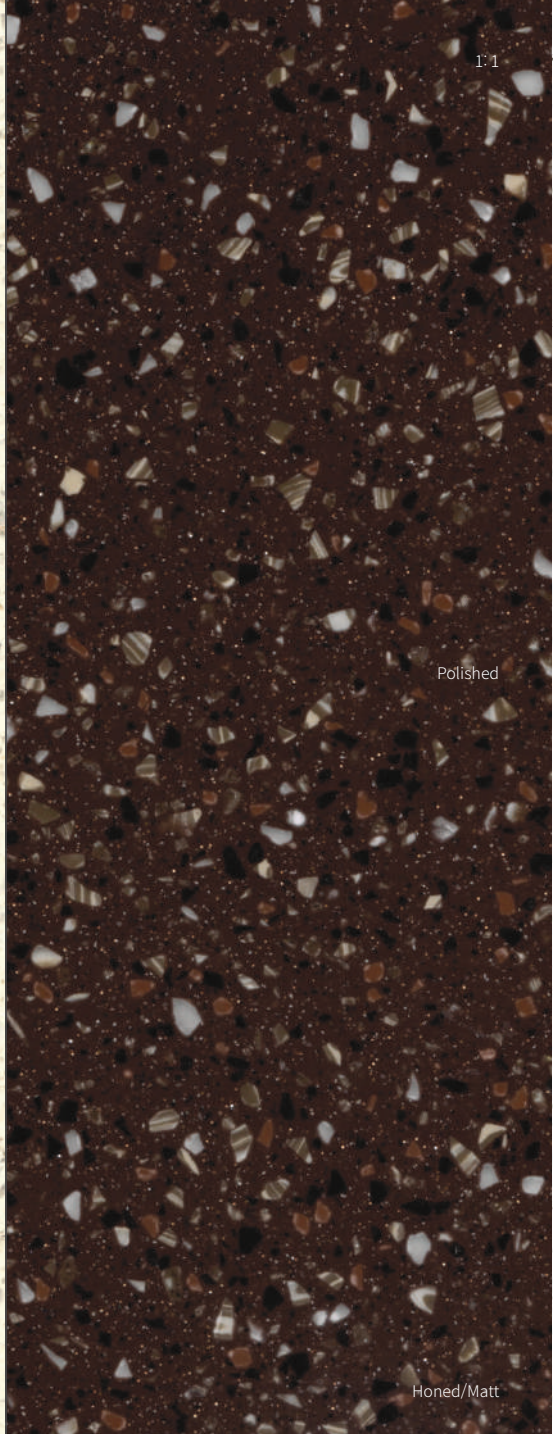
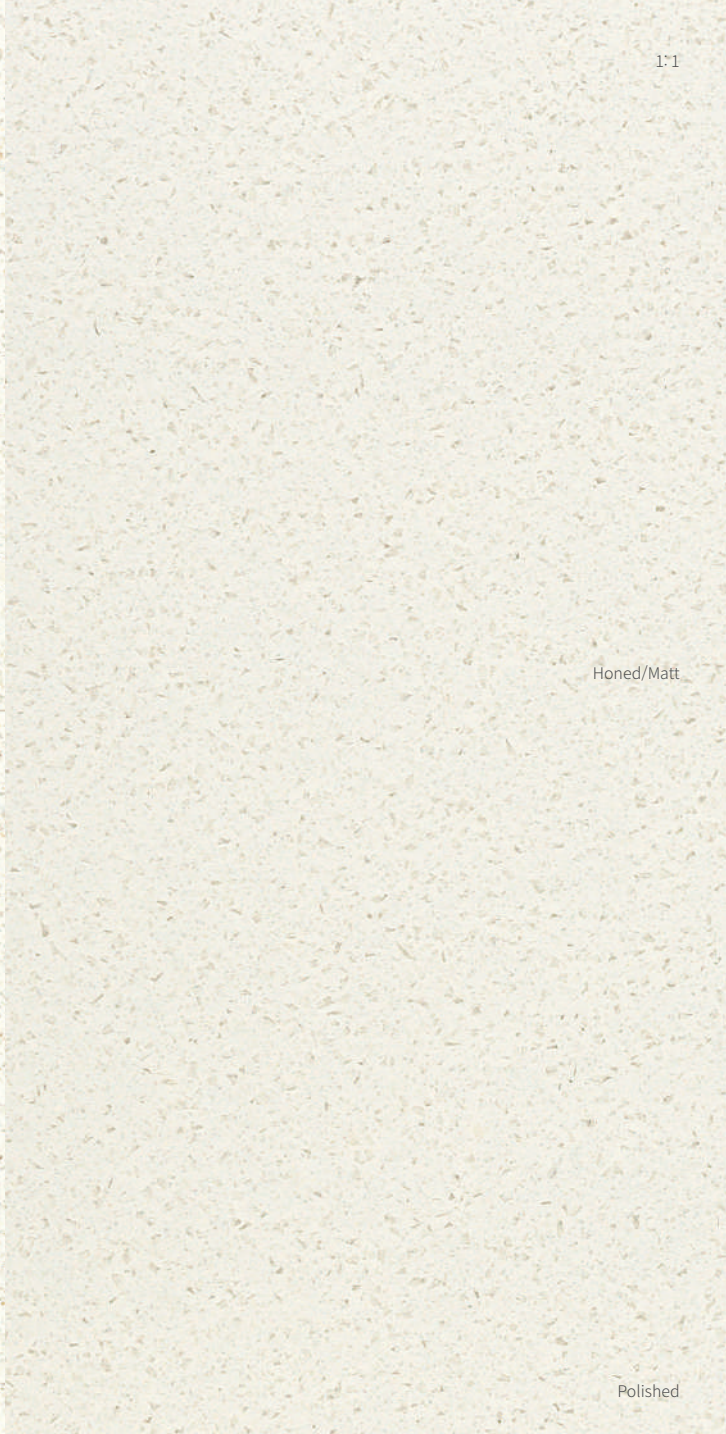
Urban Concrete G554

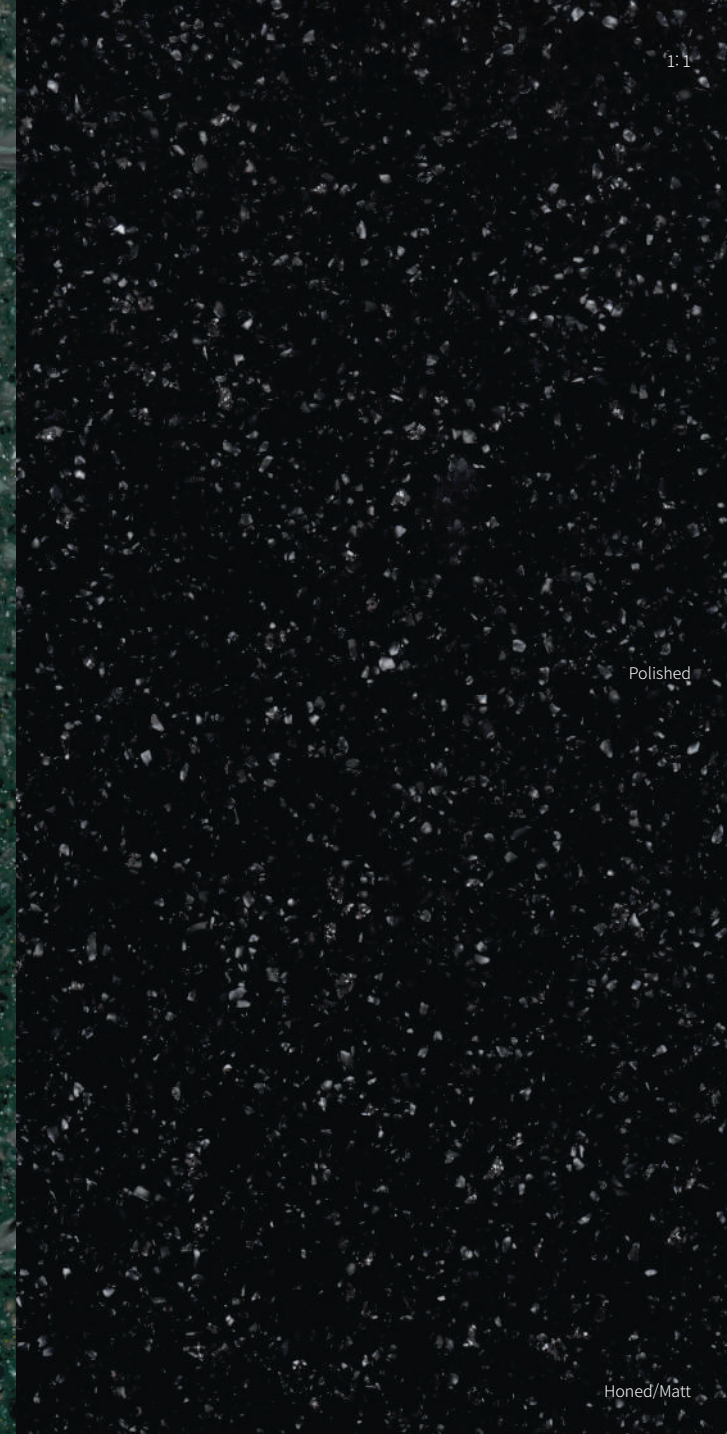
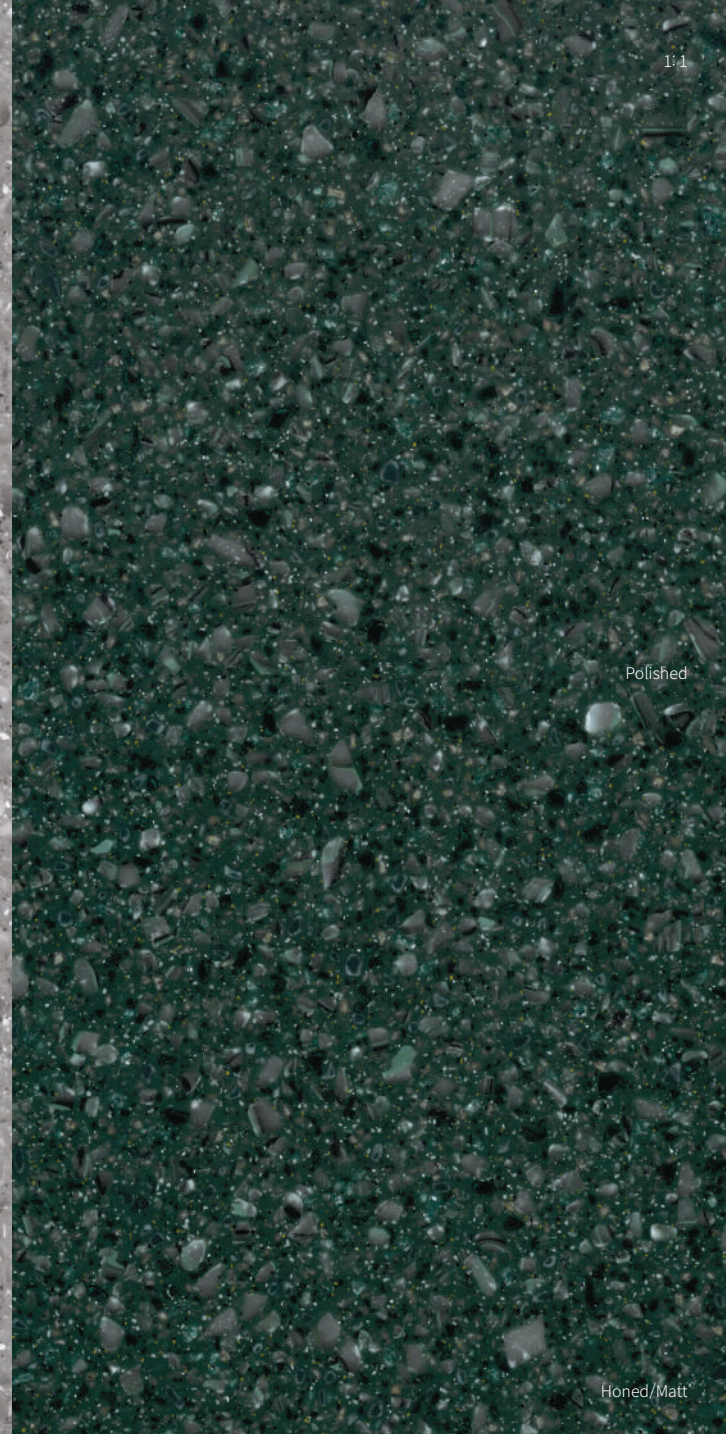
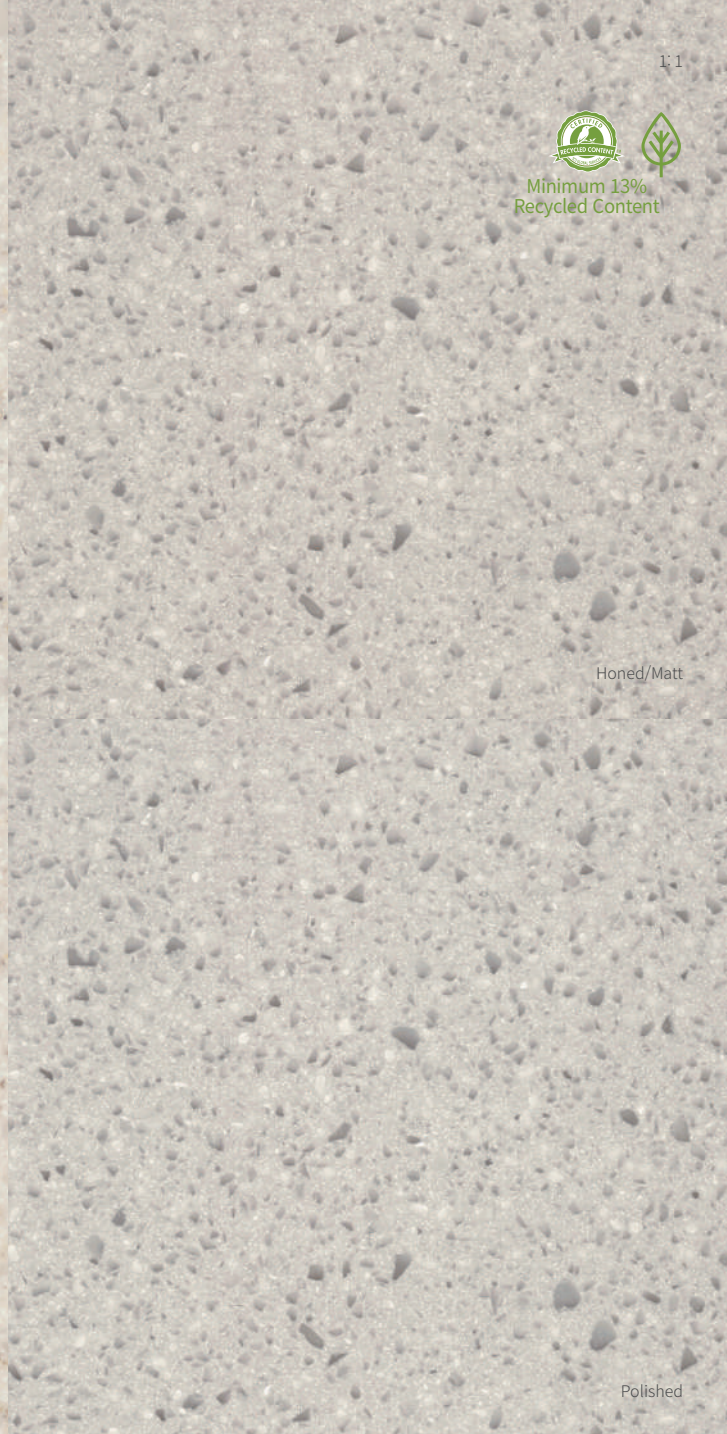
Honed/Matt

Polished



Steel Concrete G555







White Quartz G004 ☀

Lunar Sand G108

Arctic Granite G034 ☀ 🏠90p

Tapioca Pearl G050

Crystal Beige G101

Pebble Pearl G107

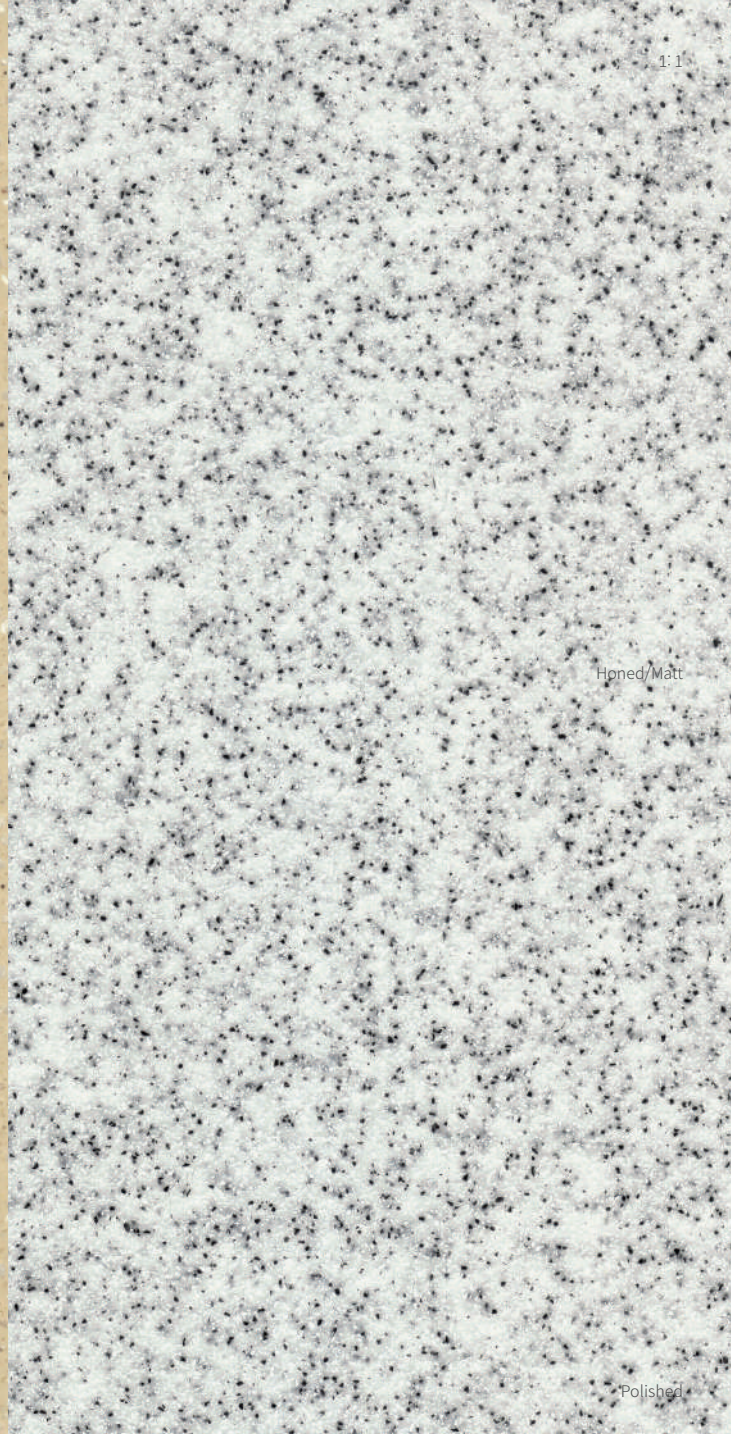
Sea Oat Quartz G038 ☀



Beach Sand G048 ☀



Peanut Butter G100



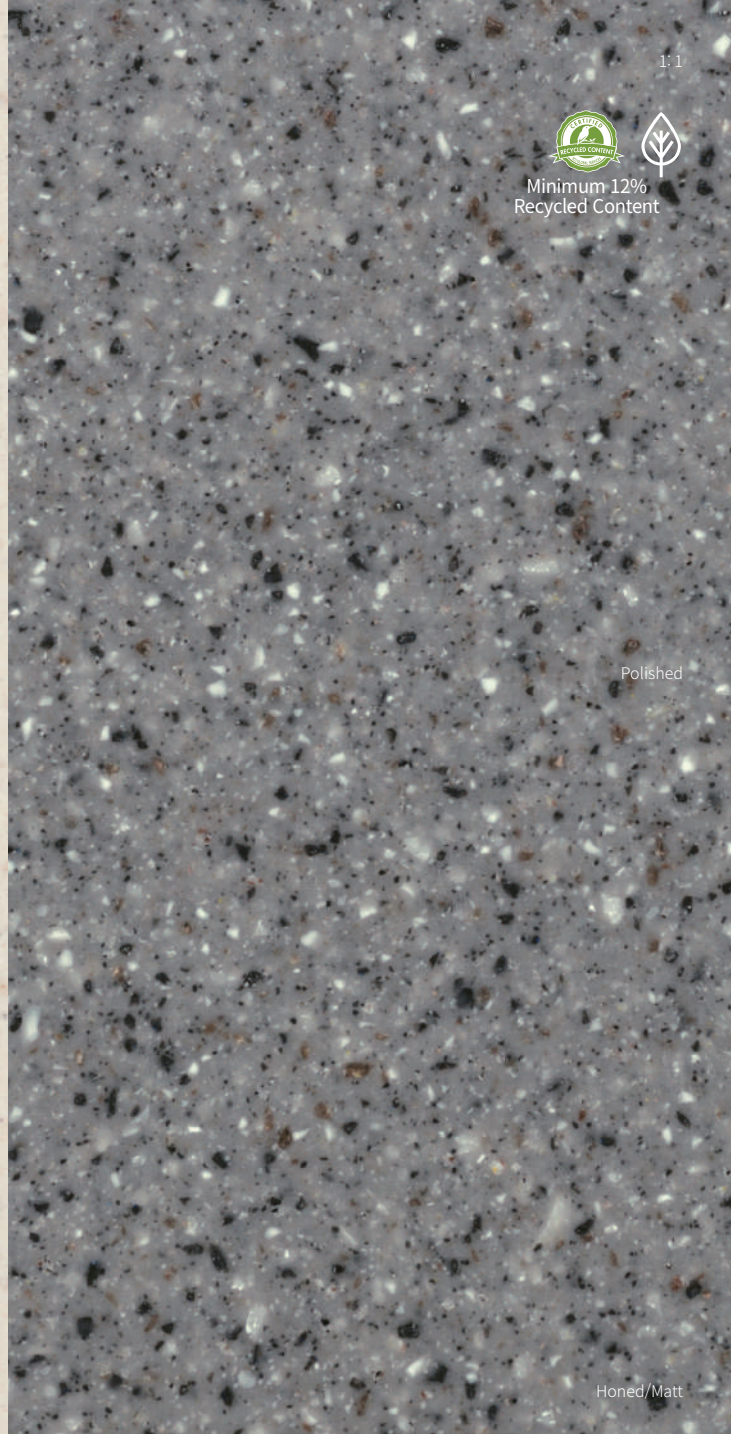
Grey Sand G002 ☀



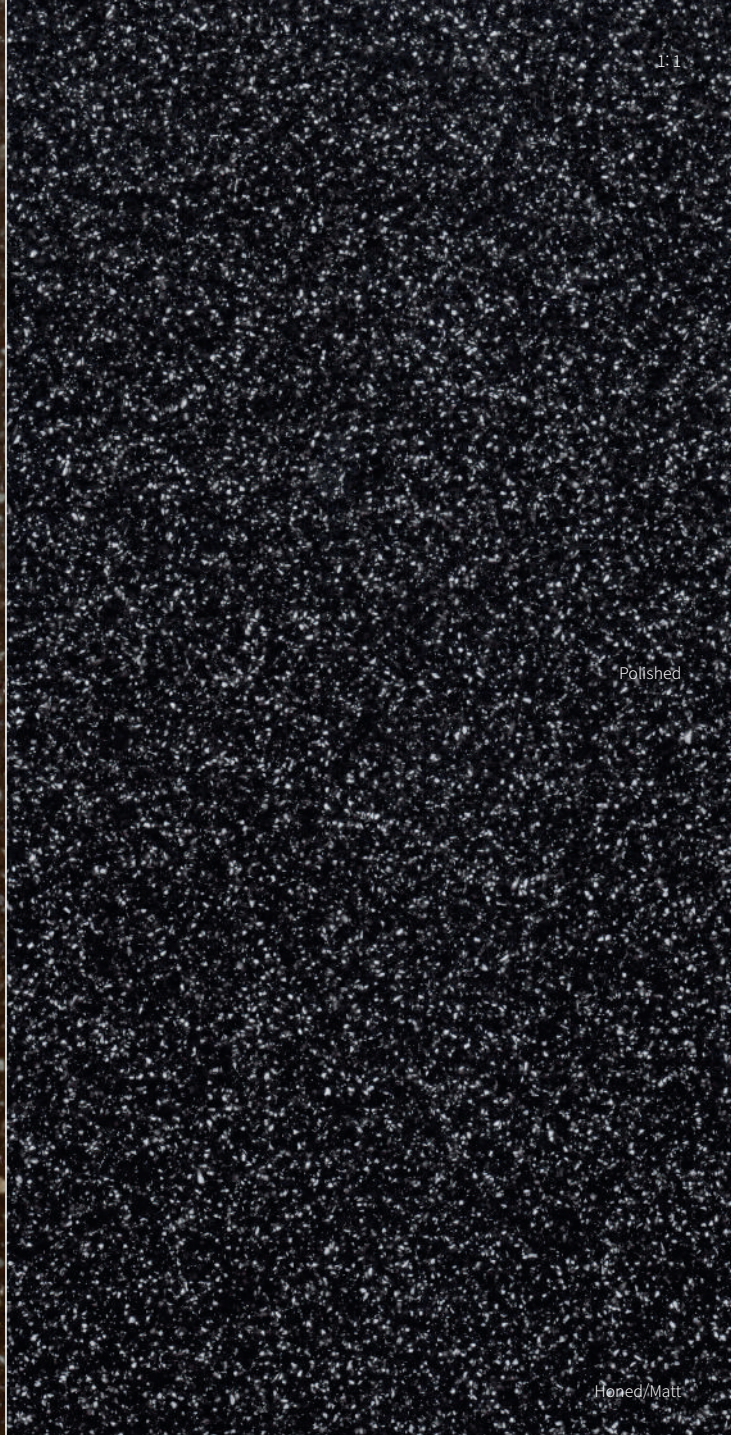
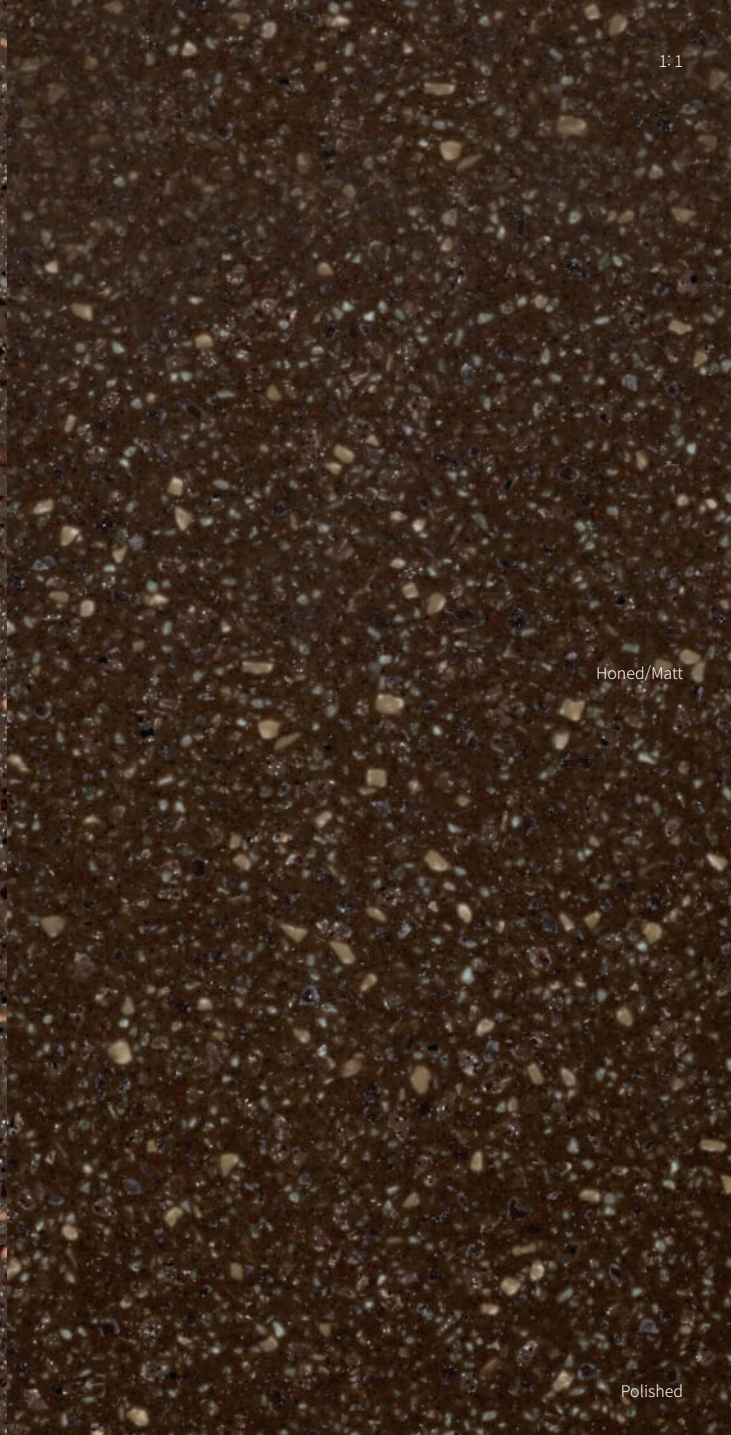
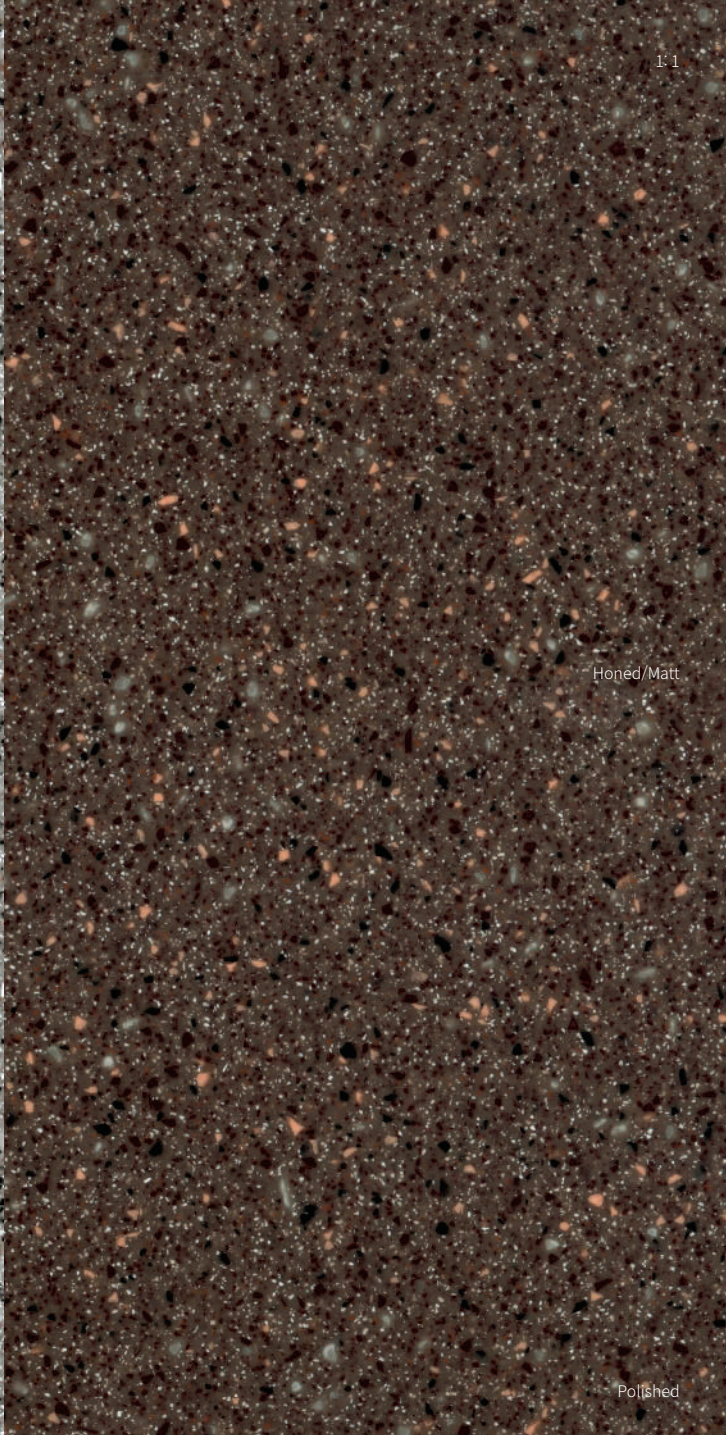
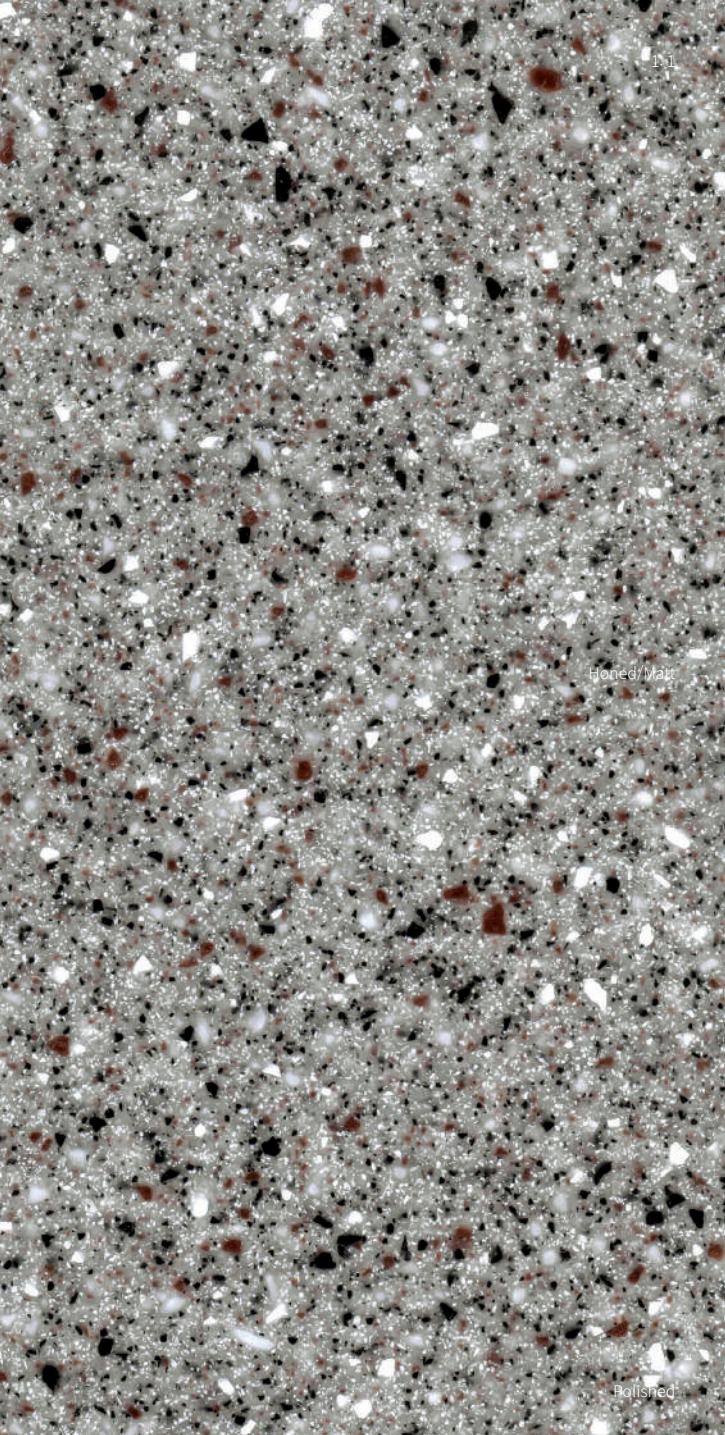
Cotton Field G180



Windy Hill G181



Highland G183



Platinum Granite *G007*

Allspice Quartz *G063*

Mocha Granite *G074*

Black Sand *G009* 91p

Black Granite *G031* ☆

Black Pearl *G010* ☆ 91p

SOLIDS

<div><div></div><div>Honed/Matt</div><div>Polished</div></div>	<div><div>Ultra-Thermoforming Alpine White S928</div><div></div></div>	<div><div></div><div>Honed/Matt</div><div>Polished</div></div>	<div><div>Suede S121</div><div></div></div>
<div><div></div><div>Honed/Matt</div><div>Polished</div></div>	<div><div>Alpine White S028</div><div>91p, 94p, 95p</div></div>	<div><div></div><div>Honed/Matt</div><div>Polished</div></div>	<div><div>Almond S002</div><div></div></div>
<div><div></div><div>Honed/Matt</div><div>Polished</div></div>	<div><div>Diamond White S034</div><div>92p</div></div>	<div><div></div><div>Honed/Matt</div><div>Polished</div></div>	<div><div>Babylon Beige S102</div><div>92p</div></div>
<div><div></div><div>Honed/Matt</div><div>Polished</div></div>	<div><div>Arctic White S006</div><div></div></div>	<div><div></div><div>Honed/Matt</div><div>Polished</div></div>	<div><div>Steel Grey S109</div><div>92p</div></div>
<div><div></div><div>Honed/Matt</div><div>Polished</div></div>	<div><div>Ivory White S029</div><div></div></div>	<div><div></div><div>Honed/Matt</div><div>Polished</div></div>	<div><div>Marta Grey S108</div><div></div></div>
<div><div></div><div>Honed/Matt</div><div>Polished</div></div>	<div><div>Satin White S001</div><div></div></div>	<div><div></div><div>Honed/Matt</div><div>Polished</div></div>	<div><div>Concrete Grey S103</div><div></div></div>
<div><div></div><div>Honed/Matt</div><div>Polished</div></div>	<div><div>Cream S009</div><div>92p</div></div>	<div><div></div><div>Honed/Matt</div><div>Polished</div></div>	<div><div>Grey S005</div><div>93p</div></div>
<div><div></div><div>Honed/Matt</div><div>Polished</div></div>	<div><div>Nougat Cream S201</div><div></div></div>	<div><div></div><div>Honed/Matt</div><div>Polished</div></div>	<div><div>Sky Blue S203</div><div>93p</div></div>

LUCENT

<div><div></div><div>Polished</div><div>Honed/Matt</div></div>	<div><div>Light Green S212</div><div>93p</div></div>	<div><div></div><div>Polished</div><div>Honed/Matt</div></div>	<div><div>Opal S302</div><div>90p, 95p</div></div>
<div><div></div><div>Polished</div><div>Honed/Matt</div></div>	<div><div>Banana S026</div><div>93p, 94p</div></div>	<div><div></div><div>Polished</div><div>Honed/Matt</div></div>	<div><div>Sapphire S303</div><div></div></div>
<div><div></div><div>Polished</div><div>Honed/Matt</div></div>	<div><div>Orange S027</div><div></div></div>	<div><div></div><div>Polished</div><div>Honed/Matt</div></div>	<div><div>Ruby S304</div><div></div></div>
<div><div></div><div>Polished</div><div>Honed/Matt</div></div>	<div><div>Fiery Red S025</div><div>94p</div></div>	<div><div></div><div>Polished</div><div>Honed/Matt</div></div>	<div><div>Emerald S305</div><div>94p</div></div>
<div><div></div><div>Polished</div><div>Honed/Matt</div></div>	<div><div>Midnight Grey S117</div><div>94p</div></div>	<div><div>Emerald S305</div><div>Project: Milan Design Week</div><div>Location: Superdesign Show</div><div>Design: Marcel Wanders</div><div>Material: HIMACS Emerald, Fiery Red</div><div>Photo credit: ©Valentina Zanobelli</div></div>	
<div><div></div><div>Polished</div><div>Honed/Matt</div></div>	<div><div>Coffee Brown S100</div><div>95p</div></div>		
<div><div></div><div>Polished</div><div>Honed/Matt</div></div>	<div><div>Dark Night S111</div><div></div></div>		
<div><div></div><div>Polished</div><div>Honed/Matt</div></div>	<div><div>Black S022</div><div>94p, 95p</div></div>		



Nebula
T010 - 77p

Project:
Office McDonald's in Almaty
Location:
Kazakhstan, Almaty
Fabricator:
Elite jp Plus LTD
Product information:
T010 Nebula
Application:
Washroom Countertop



Santa Ana
VA01 - 79p



Terrazzo Classico
Q001 - 8p

Image credits:
©Studio Podrini



Santa Ana
VA01 - 79p

Image credits:
©Studio Podrini



Ice Queen
W001 - 78p



Shadow Queen
W003 - 78p

Image credits:
©Studio Podrini



Shadow Queen
W003 - 78p

Image credits:
©Studio Podrini



Star Queen, Opal, Gemini, Arctic Granite
W004, S302, VW01, G034
- 78p, 88p, 79p, 81p

Project:
FILTER lamp
Location:
Transitions II exhibition,
Dutch Design Week
Design:
Sabine Marcelis
Material:
W004 Star Queen,
S302 Opal, VW01 Gemini,
G034 Arctic Granite
HIMACS Supplier:
Baars & Bloemhoff,
The Netherlands
Photographer:
©Ronald Smiths



Red Quinoa
W010 - 78p



Alpine White
S028 - 87p

Image credits:
©Studio Podrini



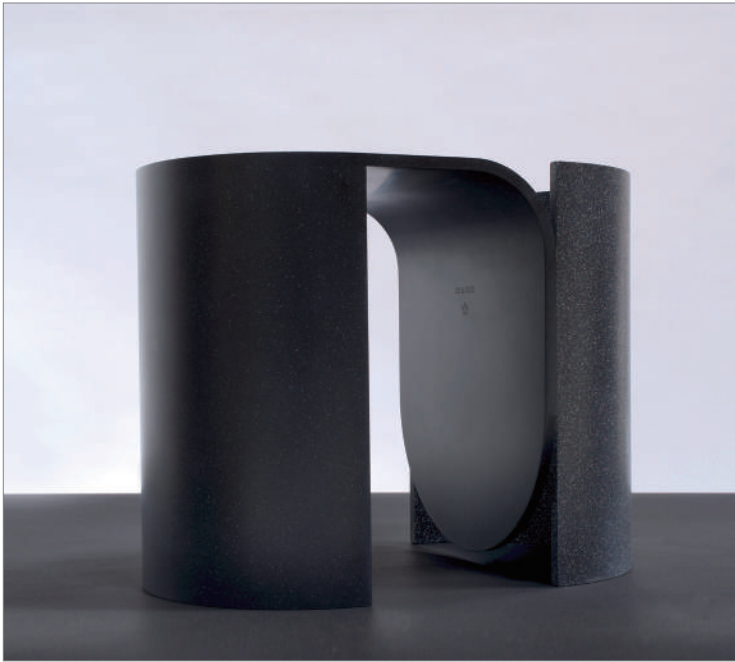
Diamond White
S034 - 87p

Project:
Concert Hall "Zaryad'ye"
Location:
Ulitsa Varvarka, д. 6,
стр. 4, Moskva
Material:
S034 Diamond White



Steel Grey
S109 - 87p

Project:
TABLE om3.0
Location:
MAISON & OBJET
Design:
Olivier Moravik, Mjiila
Material:
S109 Steel Grey
Photo credit :
©Mjiila



**Black Sand,
Black Pearl**
G009,G010 - 86p

Project:
OS Δ OOS "Arc"
furniture collection
Design:
OS Δ OOS, The Netherlands
Fabrication:
Bone Solid, The Netherlands
Material:
G009 Black Sand,
G010 Black Pearl
Photo credit:
©Patrick Meis
Others Material supplier:
Baars & Bloemhoff,
The Netherlands



Alpine White
S028 - 87p

Project:
Hogatec Fair
Designer:
JOI-Design
Fabricate:
Heinrich Viethen
Innenausbau-Klopfer
Surfaces,
Photograph:
by Tobias D.Kern
Materials:
S028 Alpine White



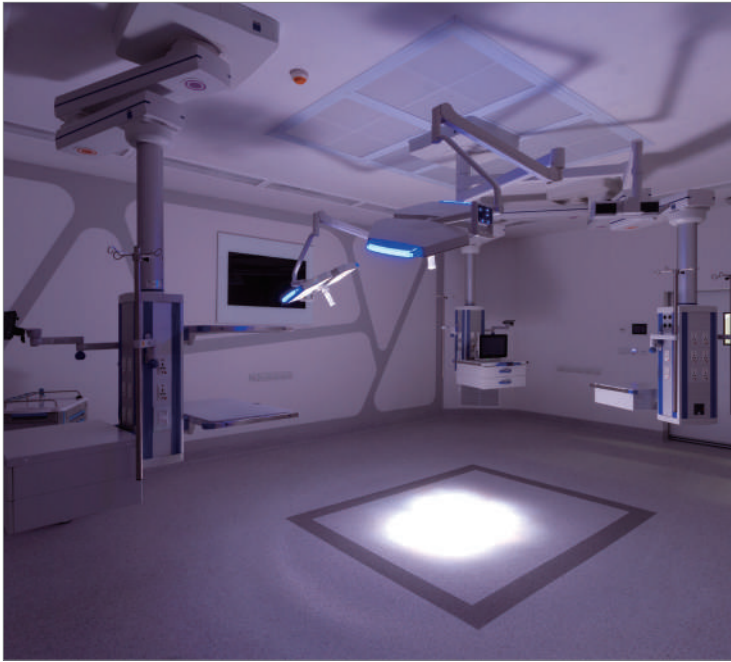
Cream
S009 - 87p

Project:
Private Villa in Cannes
Location:
Cannes, France
Design:
Pierre Guidoni, Jean Rogliano
Fabrication:
Menuiserie Bareau, France
Material:
S009 Cream
Photo credit:
©Mathieu Ducros



Babylon Beige
S102 - 87p

Project:
"Artika" kitchen
Design:
Pedini Cucine
Fabrication:
FG Arredi srl
Material:
S102 Babylon Beige
Photo credit:
Pedini Cucine



Grey
S005 - 87p

Project:
Samitivej Hospital
Location:
Sukhumvit, Thailand
Designer:
Rafa Interior
Material:
S005 Grey



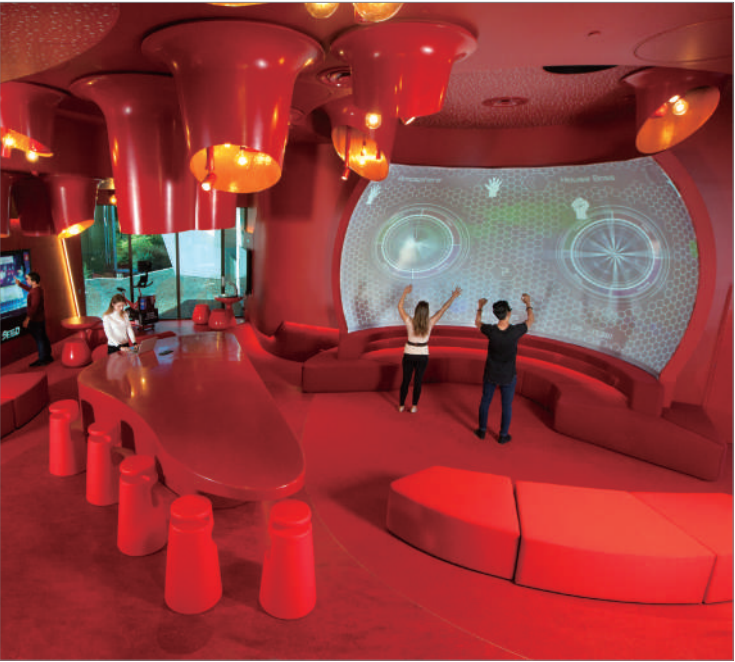
Sky Blue
S203 - 87p

Project:
Cerro & Buff
Location:
Sweden
Design BUFF:
Joel Karlsson
CERCO:
Federico Churba
Fabrication:
Karl Andersson & Sner
Material:
S203 Sky Blue
Photo credit:
Jonas Sällberg



Banana, Emerald
S026, S305 - 88p

Project:
V Rev Vegan Restaurant
Location:
Manchester, United Kingdom
Designer:
Acme Refrigeration,
United Kingdom
Fabrication:
Retail Outlet Design,
United Kingdom
HIMACS Supplier:
James Latham,
United Kingdom
Material:
S305 Emerald, S026 Banana
Photo credit:
Photographed by Acme



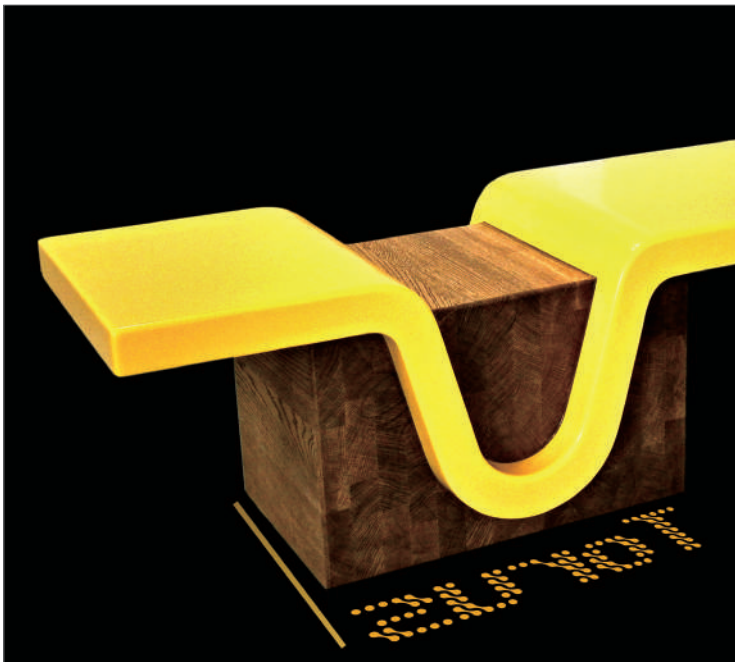
Fiery Red
S025 - 88p

Project:
Red Zone at Griffith University
Location:
Gold Coast Queensland,
Australia
Designer:
Cox Rayner
Fabricator:
Solids Surface Productions
Product information:
S025 Fiery Red
Application:
Countertops,
wall and ceiling features



Light Green, Banana
S212, S026 - 88p

Location:
Bucharest, Romania
Design:
Atvanguard Design
Team | Adriana Tihon
Fabrication:
Atvanguard
Material:
S212 Banana,
S026 Light Green, and Grey
Photo credit:
©Stelian Popa



Banana
S026 - 88p

Project:
TORUS
Designer:
Javoslav Huracek
Fabricator:
Drevovývoba Podzimek
Material:
S026 Banana
Photo Credits:
Tomáš Dvůřák



Fiery Red, Black, Alpine White
S025, S022, S028
- 88p, 87p

Project:
FLOATER
Design:
Manuel Kretzer,
Mathias Bernhard
(CAAD, ETH Zurich) /
Responsive Design Studio
Fabrication:
kläusler acrylstein ag,
Switzerland
Material:
Alpine White, Black,
Fiery Red
Photographer:
©Manuel Kretzer



Midnight Grey
S117 - 88p

Location:
Asthon College,
United Kingdom
Design:
GA Studio
Fabrication:
Lomax Interiors
Material:
S117 Midnight Grey
Photo credit:
Infinite 3D Ltd



**Opal,
Alpine White**
S302, S028 - 88p, 87p

Project:
Tourist Office at
Plaza Mayor in Madrid
Location:
Plaza Mayor - Madrid, Spain
Design:
Jose Manuel Sanz Arquitectos
Fabrication:
Maderama carpintería, Spain
Material:
S302 Opal, S028 Alpine White
Photo credit:
© Jesús Granada



**Opal
S302- 88p**

Project:
Novotel Moscow
Design Company:
UM Architects
Colour:
S302 Opal
Fabricator:
ArtCor



**Coffee Brown
S100 - 88p**

Project:
Ananti CC
Location:
Seoul, Korea
Materials:
S100 Coffee Brown



**Black
S022 - 88p**